

DRAFT BOOK

bLUeprint your Lehigh Experience

2023-2024 | VERSION 1.11

MY DRAFT BOOK

Until now...your journey may have been outlined for you. You may have taken a predetermined path to arrive here at Lehigh.

But this journey is different. This journey is directed by you. The path is yours to create, a blank page full of countless possibilities. You decide what kind of relationships you want, how you will express your values and how you will make an impact in the community. This booklet is yours to record your thoughts, ideas, notes and observations, which may come in the form of written words, doodles, sketches...whatever makes sense for you!

This is your opportunity to create your experience. We want you to **DISCOVER** the Five Foundations and **EXPLORE** what they mean to you. We want you to **CONNECT** your ideas and experiences, and **APPLY** what you learn to real world issues and situations, but you won't have to do that alone. There are people here to help you design the best possible college and post-college experience. They are all around you - at your orientation, in the residence halls, in offices and student organizations across campus.

You'll use this book throughout your first-year specifically, and we hope it will be a helpful tool in the start of your bLUeprint journey. Find moments to pause. Think about what you've learned from the everyday experiences. Utilize the Five Foundations to challenge yourself, think about who you are, and who you want to be.

bLUeprint's



5 FOUNDATIONS



CREATIVE CURIOSITY

encourages exploration of new ideas and concepts. Students are empowered to take control of their own learning, and develop the skills necessary to be lifelong learners and innovative problem solvers.



SELF CONCEPT

encourages students to strengthen self-worth by understanding their own identities and values and expressing oneself authentically.



HEALTHY CONNECTIONS

begin with taking care of yourself. Students are encouraged to reflect on their healthy and unhealthy connections, work to identify their own personal needs and boundaries, and understand that for relationships to thrive they take attention and care.



CRITICAL CONSCIOUSNESS

is the ability to understand and analyze societal structures and systems of oppression, and to take action towards social change. We encourage students to recognize and challenge the ways in which systems can perpetuate inequality, injustice and oppression.



STRATEGIC ADAPTABILITY

recognizes that students are navigating in constantly changing environments. Students are encouraged to build skills in problem-solving, flexibility, and decision making by learning from failures and taking risks.

ORIENTATION DAY 1



Crafting our Communities with Care

Our Lehigh community is made up of many. You will have the chance to contribute and actively participate in crafting your own communities here. We hope that you will intentionally support and uplift each other with care as you do!

What are you excited or nervous about?

-
.....
-
.....
-
.....
.....
.....

Orientation Day 1 To-Do List:

- Set up/decorate my room
- Make a new friend
- Get my Orientation Leader's cell phone #
- Learn more about health, safety & wellbeing on campus
- Head to the Lehigh After Dark events for food, giveaways, and fun!
-
-
-

What are 3 fun facts about yourself that you can share with others?

1.	2.	3.

ORIENTATION DAY 2



bLUeprint is...

It will help me be successful by...

ACADEMIC ADVISING PREP

What are some academic goals you want to accomplish?

-
-
-

What do I plan to study?

- Major
- Minor
- Interests
- Specific Courses

Questions/concerns to ask my college representative about courses, schedule, etc.

-
-

CONTACT INFORMATION

- Academic Advisor:
- Office Location:
- Email:
- Times Available:

RESIDENCE LIFE

.....▶ Your Guide to Living @ Lehigh



STAFF RESOURCES



Gryphon: A peer student leader whose responsibility is to promote an inclusive, supportive, and engaging environment in your community

Name & Contact Information:



Head Gryphon: A returning gryphon who takes on additional responsibilities in your community, and provides additional support to all of the Gryphons

Name & Contact Information:



Area Supervisor: Your Assistant Director

A live-in staff member who oversees the community, supervises the Gryphons, and can provide additional guidance and support

Name & Office Location:

COMMUNITY NOTES

Community Meetings

Important (and mandatory) meetings led by your Gryphon to share urgent information and discuss community needs/issues/expectations as needed



G-chats - An individual conversation with your Gryphon during the semester to check in and touch base



Important Policies

- You must be 21 to be in possession of or consume alcohol.
- You are responsible for your behavior and the behavior of your guests at all times.
- See the University Code of Conduct to learn about the rules, regulations, and sanctions for all students. See the General Provisions for Occupancy (GPO) to view the expectations for those residents living on-campus.

Talk to your Gryphon about the events that are happening within your community throughout the semester!



Who do I call if I need help?

The Gryphon On-Duty number:

.....

LUPD #: 610-758-4200

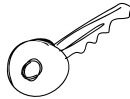
Remember: Gryphons are On-Duty 8:00PM-8:00AM on weekdays and 24/7 on weekends.

Who are three people I met at my first floor meeting I want to get to know better this semester?

Here are some questions I have for my Gryphon during my first G-Chat meeting:

-
-
-

Locked Out?



Monday-Friday:

7:00AM - 4:45PM:

Go to the IDEAL Office (corner of Taylor Street and University Drive) to borrow a temporary key

4:45PM - 8:00PM:

Contact LUPD

8:00PM - 7:00AM:

Call the Gryphon On-Duty

Saturday or Sunday:

Call the Gryphon On-Duty

*The first lockout is free of charge. There will be fees for subsequent lockouts, so remember your key and Lehigh ID card when you leave your room!

Important Reminders

I know how to get in touch with my Gryphon when needed

- I added the Gryphon On-Duty number in my phone
- I added the LUPD number in my phone
- I have joined my floor's GroupMe
- I know how to find out when a Gryphon is hosting an event

REMEMBER

Lock your door when you are not in your room and when you are sleeping. The most common incidents happen because someone left their door unlocked.

Need Something Fixed in your Room?

• Non-Emergency Maintenance

Fill out a work order at facilities.lehigh.edu

• Emergency Maintenance:

8:15am-4:30pm: Call the Office of Facilities at 610-758-3940

After Hours: Leave a message at 610-867-3326

IT'S ON



This pledge is a personal commitment to help keep all people safe from sexual assault. It is a promise not to be a bystander to the problem, but to be a part of the solution.

I PLEDGE To RECOGNIZE that non-consensual sex is sexual assault. To IDENTIFY situations in which sexual assault may occur. To INTERVENE in situations where consent has not or cannot be given. To CREATE an environment in which sexual assault is unacceptable and survivors are supported.

CONSENT IS...

- It sounds enthusiastic, affirmative, positive, specific, sexy
- It looks like a head nod, a smile, a gesture, a wink, a thumbs up
- It smells like pheromones, sweat, lotion, eau de toilette, skin
- It tastes like mouth-watering, chocolate, guacamole, spicy, pizza
- It feels like you're sober, safe, butterflies in your stomach, a cozy sweater, complete

**SURVIVOR
SUPPORT &
INTIMACY
EDUCATION**



BREAK
THE SILENCE
PEER EDUCATORS



lehigh.edu/go/ssie

SEX COMMUNICATION AGREEMENT

- Describe what it would look like for you to give consent and how would you communicate that to a partner?

- What signs would you look for to know that you don't have or can't get consent from a partner?

- How would you intervene as a bystander in an incident of sexual misconduct?

- Where would you go or who would you contact at Lehigh if you have questions about sex/sexuality/sexual misconduct?

- As a new Lehigh student how could you contribute to creating a sexually safe and survivor supportive community at Lehigh?

I _____ pledge that as a Lehigh student, I will talk about sex with potential partners, only engage in consensual sex, not violate Lehigh's policies regarding sexual misconduct, will intervene in situations of sexual misconduct, and believe and support survivors."

Signature: _____

ORIENTATION DAY 3



At Lehigh we care about your health, safety, and well-being

WHO or WHAT will guide my decisions at Lehigh?

-
-
-

**There are many ways to manage your health and well-being.
How will you practice self-care?**

(Commit to 3 acts of self-care that you will engage in this year.)

1.
2.
3.

If you need someone to talk to, try:

• **Speaking with your:**

- Orientation Leader:
- Gryphon:
- NavigateLU Faculty/Staff:
- Academic Advisor:

• **Signing up for a group workshop through UCPS**

• **Making an appointment for counseling**



**Download the Hawkwatch App and click
“Support Resources” to learn more about
how you can find support all over campus.**

ORIENTATION DAY 4



What does community at Lehigh mean to you?

During Orientation, you have heard what community means to faculty, staff, and other students at Lehigh. Now, it's your turn!

.....

.....

.....

.....

.....

.....

→ CRAFT YOUR COMMUNITIES AT LEHIGH

- Join a student organization
- Form a study group with classmates
- Meet with your NavigateLU collaborator
- Talk to people in your Residence Hall
- Attend a Lehigh After Dark (LAD) event
- Explore South Bethlehem with someone new
- Brainstorm your own ways!

1.

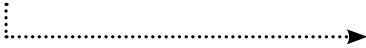
2.

3.

4.

5.

FIRST DAY OF CLASSES



Get yourself organized! The first week of classes is a chance to start good habits early on.

My Schedule

MONDAY

Class:
Time:
Location:

Class:
Time:
Location:

Class:
Time:
Location:

Class:
Time:
Location:



What class do you think will be the most challenging? The most interesting?

ABBREVIATION GUIDE

	Code	Meaning
Days of the Week	M	Monday
	T	Tuesday
	W	Wednesday
	R	Thursday
	F	Friday
	TR	Tues., Thurs
	MWF	Mon., Wed., Fri.
Academic Buildings	BI	Business Innovation Building
	CU	Chandler Ullmann
	CX	Coxe Hall
	CO	Coppee Hall
	DR	Drown Hall
	FR	Fritz Lab
	HE	Health, Science & Technology Building
	LL	Lewis Lab
	MG	Maginnes Hall
	MO	Mohler Building
	NV	Neville
	MU	Mudd Building
	PA	Packard Lab
RB	Rauch Business Center	
ST	STEPS	
WH	Whitaker Lab	
XS	Christmas Saucon Hall	

Supplies Needed?

-
-
-
-

MY WEEKLY SCHEDULE

	MONDAY	TUESDAY	WEDNESDAY	THURSDAY	FRIDAY
8:00					
8:30					
9:00					
9:30					
10:00					
10:30					
11:00					
11:30					
12:00					
12:30					
1:00					
1:30					
2:00					
2:30					
3:00					
3:30					
4:00					
4:30					
5:00					
5:30					
6:00					

Fill in the weekly calendar above to get yourself organized from the very beginning! Use the empty spaces to write in events or meetings (ex. Club Expo, meeting with advisor, etc).

I'm nervous about...

I'm excited to...

Calculate Your Grade Point Average

Use this sample chart as an example to fill out yours below! This will help you understand the grades you need to get the GPA you want.

Class Name	# Credits	Grade	x Point value of grade	= Grade Points
English	3	A	4 points	12
Math 21	4	C	2 points	8
ENGR 97	2	B+	3.3 points	6.6
Physics 11 (With Lab)	5	A-	3.7 points	18.5
TOTAL	14			45.1



$\frac{\text{Total Grade Points}}{\text{Total \# of Credits}} = \text{GPA}$	$\frac{45.1}{14} = 3.22 \text{ GPA}$
---	--------------------------------------

Point values for each grade are...

- A 4.0
- A- 3.7
- B+ 3.3
- B 3.0
- B- 2.7
- C+ 2.3
- C 2.0
- C- 1.7
- D+ 1.3
- D 1.0
- D- 0.7
- F 0



NOW IT'S YOUR TURN!

Class Name	# Credits	Grade	x Point value of grade	= Grade Points
TOTAL				

ACADEMIC AND TUTORING RESOURCES

CENTER FOR ACADEMIC SUCCESS

Group Tutoring:

Sign up for weekly 2 hour group tutoring sessions. Students are expected to attend on a regular basis after signing up.

Walk-in Tutoring:

Walk-in tutoring is available in Williams Hall 451. Come once or come every week!

Residential Tutoring:

Tutors will be available in first-year residence hall lounges to provide assistance in Chemistry and Calculus.

Peer Academic Coaching:

Peer Academic Coaches are undergraduate students who can assist you reach your definition of academic success through on-going conversation around study skills and by providing short-term accountability.

Academic Coaching and Educational Support (ACES):

ACES is a four-week, cohort based academic support program designed to help students reach their academic goals.

Study Group Program:

The Study Group program facilitates connections between students who are seeking to form a study group. **Simply fill out the form on our website to access the list of participants and start your study group today!**

Williams Hall 301

intutor@lehigh.edu

610-758-5181

studentaffairs.lehigh.edu/success

MATH STUDY/ HELP CENTER

No appointment needed. Come by to receive help in a specific math course. The schedule is posted on Mathematics Department's homepage at math.cas.lehigh.edu

Chandler-Ullmann 300

WRITING AND MATH CENTER

Schedule a 30 minute appointment or check out their online resources.

Drown Hall 110

incent@lehigh.edu

610-758-3098

studentaffairs.lehigh.edu/content/writing-math-center

Highlight the resources that will enhance your success

GET INVOLVED AT THE CLUB EXPO!

When: Monday, August 28th @4:00 PM (Rain Date: 8/29)
Where: Clayton UC Flagpole and Memorial Walkway

The Club Expo is one the biggest events of the entire year with dozens of student organizations, local groups, and community businesses featured. It is a great way to connect your values and interests to the many opportunities at Lehigh.

Download your Event Mobile Pass

Use this to check in at Campus Events

1. Scan this QR code on your mobile device
2. Enter your credentials
3. Save pass to Apple Wallet or Google Play. (works better if you use your phone camera and not Snapchat)



Clubs I signed up for today:

-
-
-
-
-
-

List some people you talked to today so you can reach back out later!

Club/organization that interested you the most:

What do you hope to gain from getting involved on campus?

Visit lehigh.campuslabs.com/engage/organizations or sign into LINC to view the full Club and Organization Directory.

NAVIGATELU: GOAL SETTING

.....> **Complete SMART goals on this page before Meeting 1**
What will success look like to you? Academically? Socially?



S

SPECIFIC

How am I going to accomplish this goal?



M

MEASURABLE

How can you track your progress?



A

ATTAINABLE

Is this a manageable goal?



R

REALISTIC

Do you have the ability and resources to reach your goal?



T

TIMELY

When will you reach your goal?

FALL SEMESTER GOALS

.....

.....

.....

.....

.....

.....

.....

SPRING SEMESTER GOALS

.....

.....

.....

.....

.....

.....

.....

Resources needed to achieve these goals

-
-
-
-

What barriers might prevent you from achieving these goals? How will you overcome them?

-
-
-
-

REMEMBER TO STEP BACK AND CELEBRATE YOUR SUCCESSSES!

NAVIGATELU: MEETING 1

My faculty/staff collaborator is...

.....

During NavigateLU, I will...

.....

My first meeting is on...

.....

.....

.....

PLAN

Which one of the Five Foundations do you relate to the most? Why?

(See page 1 for foundation descriptions)

.....

.....

.....

.....

.....

.....

.....

.....

.....

.....



5x10's I might want to attend...



What is NavigateLU?

NavigateLU is a 10-week program where you will set goals, develop an action plan, and take the crucial first steps along your pathway to success. You will meet individually with a faculty/staff member at least twice and meet with your Orientation group. The 5x10 (5 by 10) program is a part of NavigateLU to expose you to the multitude of opportunities that exist on campus and learn about yourself and the 5 Foundations for Student Success.

NAVIGATELU: 5X10 PROGRAMS

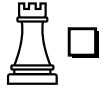
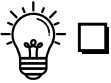
How can I search for events?

- 1. Log into “Connect Lehigh” and search for “LINC”
- 2. Click on “Events” on the top left of the page
- 3. Under categories on the left side of the page, filter by the category “5x10” or one of the 5 Foundations

How can I check what I’ve completed?

- 1. Log into “Connect Lehigh” and search for “LINC”
- 2. Click on your personal icon in the top right corner
- 3. Click on “Paths”

Which programs did I attend?



REFLECT

**What foundation have I learned the most from?
I learned...**

.....

.....

.....

.....

.....

.....

.....

.....

.....

.....

.....

**What foundation do I want to explore more in the spring semester?
I want to learn...**

.....

.....

.....

.....

.....

.....

.....

.....

.....

.....

.....

SOUTH BETHLEHEM




 TOTAL POPULATION

12,730

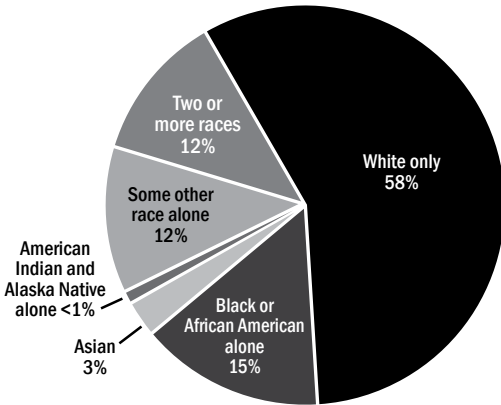


MEDIAN AGE



31

RACE AND ETHNICITY BREAKDOWN



*Additional ACS data shows 45% of individuals in South Bethlehem identifying as Hispanic.



MEDIAN HOUSEHOLD INCOME

\$35,668

Top 3 Industries

- Educational Services and Healthcare/Social Assistance
- Manufacturing
- Arts, Entertainment, and Recreation and Accommodation and Food Services

*This information refers to the immediate neighborhoods surrounding Lehigh University only.

5,856 in Labor Force → 7% Unemployment
 \$27,950 Poverty Line for a family of four → 25% Families below poverty level
 \$13,590 Poverty Line for an individual → 29% Individuals below poverty level

*From the 2020 American Community Survey

How is Bethlehem and the surrounding area unique from where you are from?

HUNGRY FOR MORE?

Looking to venture out of Lehigh Dining food? Visit the amazing restaurants located in South and North Bethlehem!

**Highlight the places you want to try or have tried already!*

South Bethlehem

- Alexandra's Bistros
- Anna's Brick Oven Pizza
- Beyond Juice
- Cafe the Lodge
- Campus Pizza
- Casa de Campo
- Couchpota.doh! Kitchen
- Deja Brew
- Dinky's Ice Cream Parlor & Grill
- El Jefe's
- Flying V
- The Goose
- General Zapata
- Hi Pot
- Hocaa Bubble Tea
- Hummus House
- Johnny's Bagels & Deli
- King Wing
- La Lupita
- Lehigh Pizza
- Lit Coffee Roastery and Bake Shop
- Molly's Irish Grille and Sports Pub
- Mr. Lee's Noodles
- Nawab Indian Restaurant
- NYC Village Pizza
- Playa Bowls
- Rakki Ramen
- Randy's Pizzeria
- Roasted
- Southside 313
- Sotto Santi
- Shangwei Szechuan
- Twenty Four East
- Tulum
- Tasty China
- U and Tea
- Wonder Kitchen
- Zekraft



North Bethlehem

- Apollo Grill
- The Bayou
- Bethlehem Brew Works
- Billy's Downtown Diner
- The Brick
- Cachette Bistro & Creperie
- Edge Restaurant
- The Flying Egg
- Hotel Bethlehem
- Mama Nina's
- The Melting Pot
- Tapas on Main
- Thai Thai II
- Touch Thai Restaurant
- Twisted Olive
- Urbano Mexican Kitchen & Bar
- VegOut Bethlehem
- The Wooden Match

What is one new type of cuisine you might try while in Bethlehem?

.....

.....

.....

How has food played a role in your culture or upbringing?

.....

.....

.....

.....

EXPLORE THE VALLEY!

Below are some opportunities to learn more about the South and North Bethlehem Area. Some items may require you to purchase tickets or use personal funds. These events are denoted by the \$ symbol.



**Highlight the places you want to visit!*

WITHIN WALKING DISTANCE FROM CAMPUS:

- Go to the Farmers Market Thursdays in Farrington Square
- Attend a community festival like Celtic Classic or Oktober Fest
- Visit the shops and restaurants located on Main Street in North Bethlehem with friends
- Attend First Friday Events happening the first Friday of every month in South Bethlehem
- Attend a Banana Factory class (\$)
- Go to a concert at Godfrey Daniels
- Take in a show at the Touchstone Theater (\$)
- Walk the full length of the Greenway in South Bethlehem
- Take a class at ArtsQuest (\$)
- Go on a North Bethlehem Ghost Tour (\$)
- Visit the Moravian Bookstore on North Side
- Tour the Sun Inn (\$)
- Watch the “Rise and Fall of Bethlehem Steel” video at ArtsQuest (\$)
- Attend a performance at Zoellner Arts Center
- Volunteer at a service event, such as Spooktacular
- Head to Mountaintop to bike or hike the trails
- Take a walk on the Hoover-Mason Trestle
- Go to a free concert at SteelStacks

Visit southsideartsdistrict.com for South Bethlehem resources.

Visit discoverlehighvalley.com for even more adventures in Bethlehem and beyond!

Nearby events you heard about and want to attend:

1.

2.

3.

Fun facts you learned about Bethlehem:

1.

2.

3.

HOW TO GET AROUND

OFF-CAMPUS TRANSPORTATION

- **FREE weekend shuttle bus** service to the Lehigh Valley Mall and Walmart (sponsored by Student Involvement).
- **Lehigh and Northampton Transportation Authority (LANTA)** - free with your Lehigh ID!
- **Trans-Bridge Lines** - Travels daily from Bethlehem Transportation Center to New York City and Newark Airport.
- **Greyhound** - Travels from Allentown to a multitude of far destinations

For more resources on getting to and from Lehigh visit the OFYE's Getting to and From Lehigh page.



ON-CAMPUS TRANSPORTATION

LEHIGH UNIVERSITY TRANSPORTATION OFFICE




Visit transportation.lehigh.edu for bus routes, bus stops, tracking information, accessibility services and more.

Track buses in real time at: bus.lehigh.edu or download the HawkWatch App and/or the DoubleMap App on your phone for easy access to the Lehigh bus schedule and more!



AUGUST 2023

THE START OF YOUR
LEHIGH ADVENTURE!

SUNDAY	MONDAY	TUESDAY	WEDNESDAY
20	21	22	23
27 Orientation Day 4 	28 First Day of Classes Club Expo 4pm-6pm	29	30 NavigateLU Sign-Up Due! Go Greek Event



THINGS TO DO/CHECK OUT:

- Go to the Club Expo on Monday, August 28th and join clubs that interest you (Rain Date: Tuesday, August 29th)
- Get to know your residence hall and the people on your floor
- Walk around campus and familiarize yourself with building locations
-
-
-
-



Pro Tip:
Get to the Club Expo early with an empty stomach and a big bag!

GOALS FOR THE FIRST WEEK

-
-
-

SEPTEMBER 2023

SUNDAY	MONDAY	TUESDAY	WEDNESDAY
3 5x10 Week 2	4	5	6
10 5x10 Week 3 CAMP HAWK	11	12	13
17 5x10 Week 4	18	19	20
24 5x10 Week 5	25 Common Hour Exams 9.25-10.5	26	27

Don't forget to attend NavigateLU meetings and 5x10 programs!

Visit LINC to view all offered 5x10 events and track your progress in Banner.



Explore Your New Home!

Grab coffee or a meal somewhere new, take a walk on the Greenway or check out the Steel Stacks with a classmate.
(Visit pages 19 & 20 for more ideas)

GET STARTED ON THE RIGHT FOOT!



THURSDAY	FRIDAY	SATURDAY
	1 Last day for online registration without instructor permission Simplify Your Semester Event	2 Lehigh Football First Home Game vs. Villanova
7	8 Last day to add online with instructor permission; last day to drop online without a W CAMP HAWK	9 CAMP HAWK
14	15 Deadline to select or cancel Pass/Fail grading	16 Home Football Game vs. Cornell
21	22	23
28	29 Family Weekend 9.29-10.1	30



Simplify Your Semester

Make a game plan for your semester goals, assignments & events!

Friday, September 1 from 1:30pm-4:00pm

Fairchild-Martindale Library First Floor Lounge

Nervous about your first round of Common Hour exams?

Tip: Visit page 13 to learn about Academic & Tutoring Resources!

A majority of first-year students report difficulties with time management.

Tip: Write down all of your assignments, quizzes, and exams with due dates on your calendar to plan ahead for busy weeks! You can do this on electronic applications like Google Calendar to easily plan out your days at the tip of your fingers.

ONE GOOD HABIT I'M STARTING IS...

OCTOBER 2023

SUNDAY	MONDAY	TUESDAY	WEDNESDAY
1	2	3	4
8 5x10 Week 7	9	10	11
15 5x10 Week 8	16 Pacing Break	17	18
22 5x10 Week 9	23	24	25
29 5x10 Week 10	30 Common Hour Exams 10.30-11.9	31	

Career ready = life ready! Below are two of the many career resources to get you started in your first year. Your career team offers support to help you get the most out of your Lehigh experience & beyond.

- **Handshake:** Our central online career platform – resources on exploring careers, resumes, employer events, workshops & more. **Visit: lehigh.joinhandshake.com**
- **Career Lab:** Our drop-in career Q&A hours. Get to know the career team, career tools, & opportunities that await you! Go to Handshake, Events, & search ‘Career Lab’ for details.

FALL FUN IN BETHLEHEM! (SEE PAGE 20 FOR MORE IDEAS) 

THURSDAY	FRIDAY	SATURDAY
5	6	7
12	13 Mid Term Grades Due	14 Home Football Game vs. Georgetown
19	20	21
26	27	28

- Volunteer at Spooktacular
- Check out Oktoberfest at the Steel Stacks
- Go on a ghost tour of North Bethlehem
-
-

Feeling sick?

- Take extra preventive actions to stop the spread of germs. Wash your hands, wear your mask, and maintain 6ft distance from others.
- Get your flu vaccine! Rite-aid, CVS, and Walgreens all offer flu shots daily. Most insurances accepted.
- Maintain a healthy lifestyle! Prioritize sleep, eat healthy, exercise, and drink lots of water.
- Schedule an appointment with the Health Center located in Johnson Hall.
- Visit lehigh.edu/health for more information or call 610.758.3870.

WHAT ARE 3 WAYS YOU WILL PRIORITIZE YOUR SELF-CARE THIS MONTH?

-
-
-



NOVEMBER 2023

SUNDAY	MONDAY	TUESDAY	WEDNESDAY
			1
5	6	7 Civic Engagement Day (No Classes)	8
12	13 Spring Registration Period 11.13-11.16	14	15
19	20	21	22 Thanksgiving Break
26	27	28	29

LEHIGH TRADITION

During the week of the Lehigh-Lafayette Rivalry, our campus bleeds brown and white! Remember to wear your Lehigh gear and get excited for Bed Races, Banners, Ecoflame & so much more!

Academic Success Tip

After Thanksgiving Break, there is only two weeks left of classes before final exams. Make sure to spend time reviewing your notes to help the information stick over the long break!

THINGS I'M GRATEFUL FOR THIS MONTH:

THURSDAY	FRIDAY	SATURDAY
2	3	4 Home Football Game vs. Holy Cross
9	10 Last Day to Withdraw with a "W"	11
16	17	18 Lehigh-Lafayette Football Rivalry at Home
23 Thanksgiving Break	24 Thanksgiving Break	25
30		

-
-
-
-



TO DO ITEMS
BEFORE FINALS

-
-
-
-
-

WHAT IS THE DIFFERENCE BETWEEN INEQUALITY AND INEQUITY?



DECEMBER 2023

SUNDAY	MONDAY	TUESDAY	WEDNESDAY
3	4	5	6
10	11	12 Final Exams Begin	13
17	18	19	20 Final Exams End
24	25	26	27
31	<div style="border: 1px dashed gray; padding: 10px; text-align: center;"><p>Final Exams Tip</p><p>Studying for all your final exams can get pretty stressful. Remember to take frequent study breaks, eat healthy meals, and get exercise. It's also important to get enough sleep rather than cram information the night before a final!</p></div>		

WHERE DID YOU FIND COMMUNITY THIS SEMESTER?

THURSDAY	FRIDAY	SATURDAY
	1	2
7	8 Last Day of Classes	9
14	15	16
21	22	23 Final Grades Due
28	29	30



Things to do before you leave campus:

- Unplug all electronic devices in your room.
- Clear out any snacks/food that may spoil
- Make sure to take your room key and Lehigh ID home with you.
- Lock up your room! Store any valuables in a safe place.

• **This semester did I reach my goals? why or why not?**

.....

THIS SEMESTER TAUGHT ME...

SPRING 2024

IMPORTANT DATES

January 16 - 21, 2024 - Panhellenic Recruitment

January 21, 2024 - Interfraternity Council

Recruitment Begins

January 22, 2024 - First Day of Class

February 2, 2024 - Last Day for Web Registration

February 9, 2024 - Deadline to select or cancel

Pass/Fail grading

March 8, 2024 - Midterm grades due

March 11 - March 15, 2024 - Spring Break

April 12, 2024 - Last Day to Withdraw with a W

April 15 - 18, 2024 - Summer/Fall Registration

May 3, 2024 - Last Day of Class

May 7 - 15, 2024 - Final Exam Period

May 18, 2024 - Grades Due

May 19, 2024 - Undergraduate Commencement Ceremony

After a year in the Lehigh community, how have you crafted your communities with care?

One piece of advice that I would tell my past self is...

.....
.....
.....
.....
.....
.....
.....
.....
.....
.....
.....
.....

WINTER FUN IN SOUTH BETHLEHEM

- Go Ice Skating at the Steel Ice Center
- Visit the ArtsQuest Center to see an Oscar-Nominated film or attend a concert
- Find the perfect study spot at our local Bethlehem Coffee Shops
- Try a new restaurant (See page 19 for suggestions)
- Immerse yourself in art at the Banana Factory
- Paint some pottery at Color Me Mine

THIS SEMESTER I WANT TO KEEP...

-
-

THIS SEMESTER I WANT TO CHANGE...

-
-

YEAR2@LU

Follow the Year2@LU
Instagram



While campus might be familiar, your second year will be full of new opportunities and challenges!

How do you think your sophomore year will be different?

Which foundation do you think you'll grow in next year?

Here are some things to think about as you prepare for sophomore year...

Declaring Your Major

What classes you have enjoyed the most in your first year at Lehigh? Connect with the Center for Career & Professional Development to do more career exploration, talk to Lehigh people in particular fields, and explore more about your strengths and interests.

Getting Involved

It can be hard to get involved in everything you wanted to during your first year, but you still have the chance to explore. Check out LINC for different clubs you can join when you come back to campus in the fall.

Engaging with the Community

South Bethlehem is our home and we hope you get to explore it even more and continue to be good neighbors! Get started through the Community Service Office or explore the SouthSide Arts District!

New Roommate

Time to re-adjust and set new expectations. Living with friends can be fun and can also be challenging. Be sure to discuss expectations with your new roommate(s) so that you all can start off on the right foot.

Utilize your Campus Resources

Lehigh's campus is full of different resources that want to help each and every student, so continue to take advantage of them during your sophomore year!

Attend Looking Forward to Year2@LU in April for more!

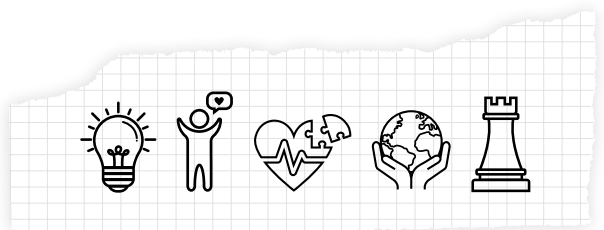
CREATE YOUR OWN....

bLUeprint

Write, draw, or find a unique way to capture and express who you are and your journey learning in the 5 Foundations.



How to
bLUeprint





Important Contacts

Academic Life & Student Transitions

610.758.4159

Center for Gender Equity

610-758-6484 • incge@lehigh.edu

Chaplain's Office

610-758-3877 • incha@lehigh.edu

Counseling and Psychological Services

610.758.3880 • incso@lehigh.edu

Disability Support Services

610.758.4152 • indss@lehigh.edu

Health and Wellness Center

610.758.3870 • inluhc@lehigh.edu

Registration & Academic Services

610.758.3200 • ras@lehigh.edu

Office of Survivor Support & Intimacy Education

610.758.1303 • inssie@lehigh.edu

Office of Multicultural Affairs

610.758.5973 • inmca@lehigh.edu

Office of the First-Year Experience

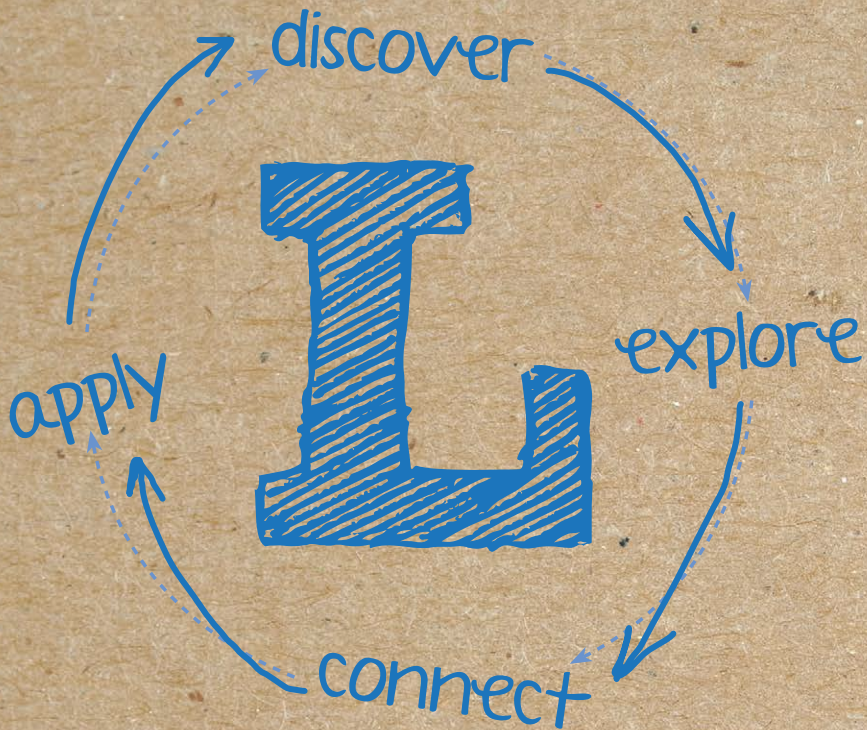
610.758.1300 • fye@lehigh.edu

Student Affairs

610-758-3890 • instuaff@lehigh.edu

The Pride Center

610-758-4574 • pridecenter@lehigh.edu



Discover each of the Five Foundations, **Explore** what they mean to you, **Connect** your ideas and experiences, **Apply** what you learn to real world issues and situations