



UNDERSTANDING OUR STUDENTS

A panel presentation for the Student Affairs
Assessment Symposium

THE PANELISTS

- Zane Kratzer, Institutional Research
- Meg Munley, Institutional Research
- Allison Ragon, First-Year Experience



OUR SOURCES

- Admissions applications
- *Generation on a Tightrope* by Arthur Levine and Diane Dean
- National Survey Student Engagement (NSSE)
- Senior Survey
- U.S. Census Bureau
- U.S. Department of Education
- Western Interstate Commission on Higher Education (WICHE)
- Lehigh BANNER data



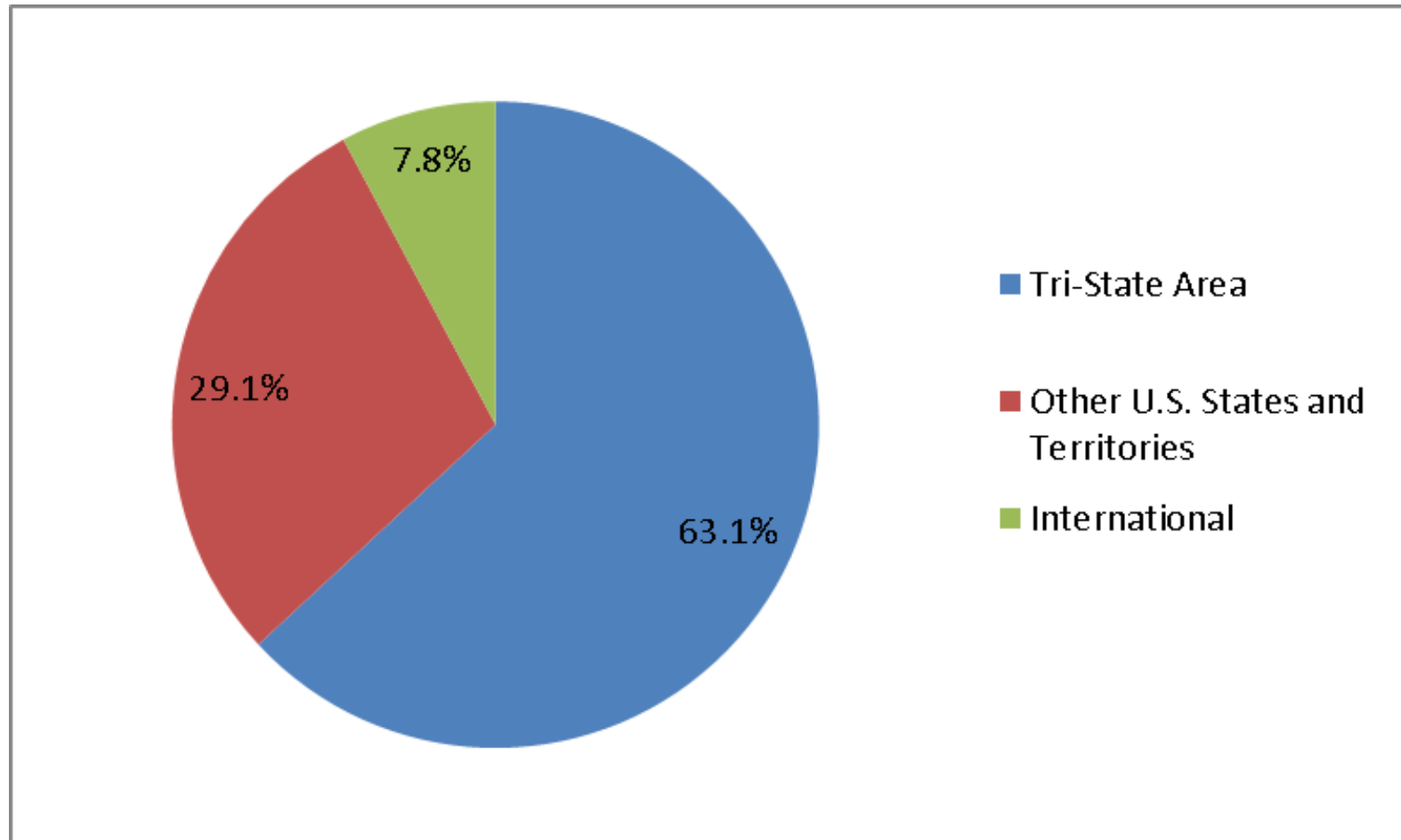
EVENTS THAT SHAPED THIS GENERATION

- Technology
- The Economy
- September 11
- Election of President Obama

Source: *Generation on a Tightrope*



GEOGRAPHIC DIVERSITY UNDERGRADUATES, FALL 2014



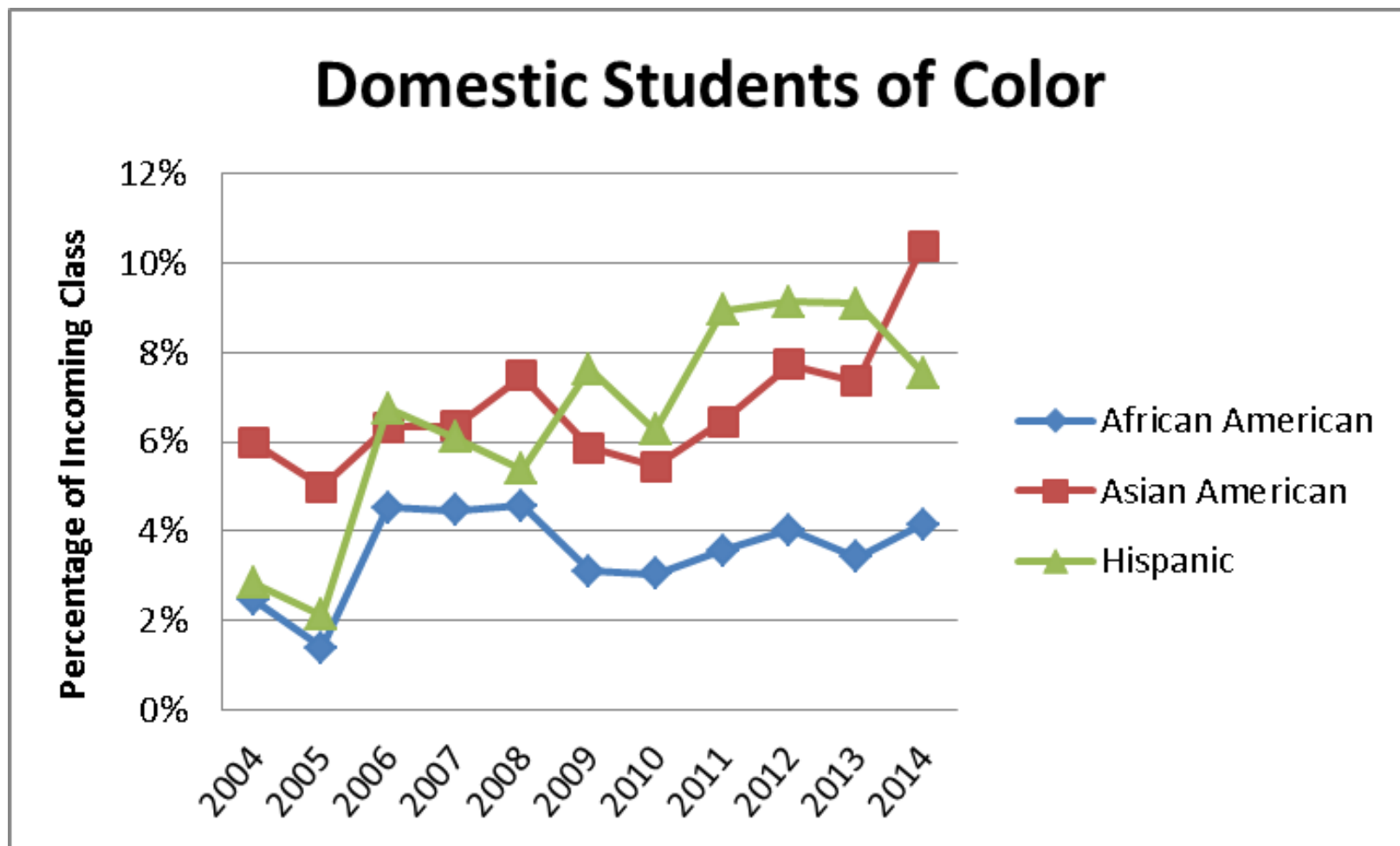
Source: Banner

INTERNATIONAL STUDENTS

- Increasing number of international undergraduate students
 - Incoming Cohort of 2004: 22 students (2.1% of class)
 - Incoming Cohort of 2014: 110 students (8.5% of class)
- Fall 2014: Total of 396 international undergraduate students from 63 countries
 - 49% from China
 - 8% from South Korea
 - 4% from Saudi Arabia
 - 3% from Turkey
 - 3% from Vietnam



FIRST YEAR STUDENTS: RACIAL AND ETHNIC DIVERSITY



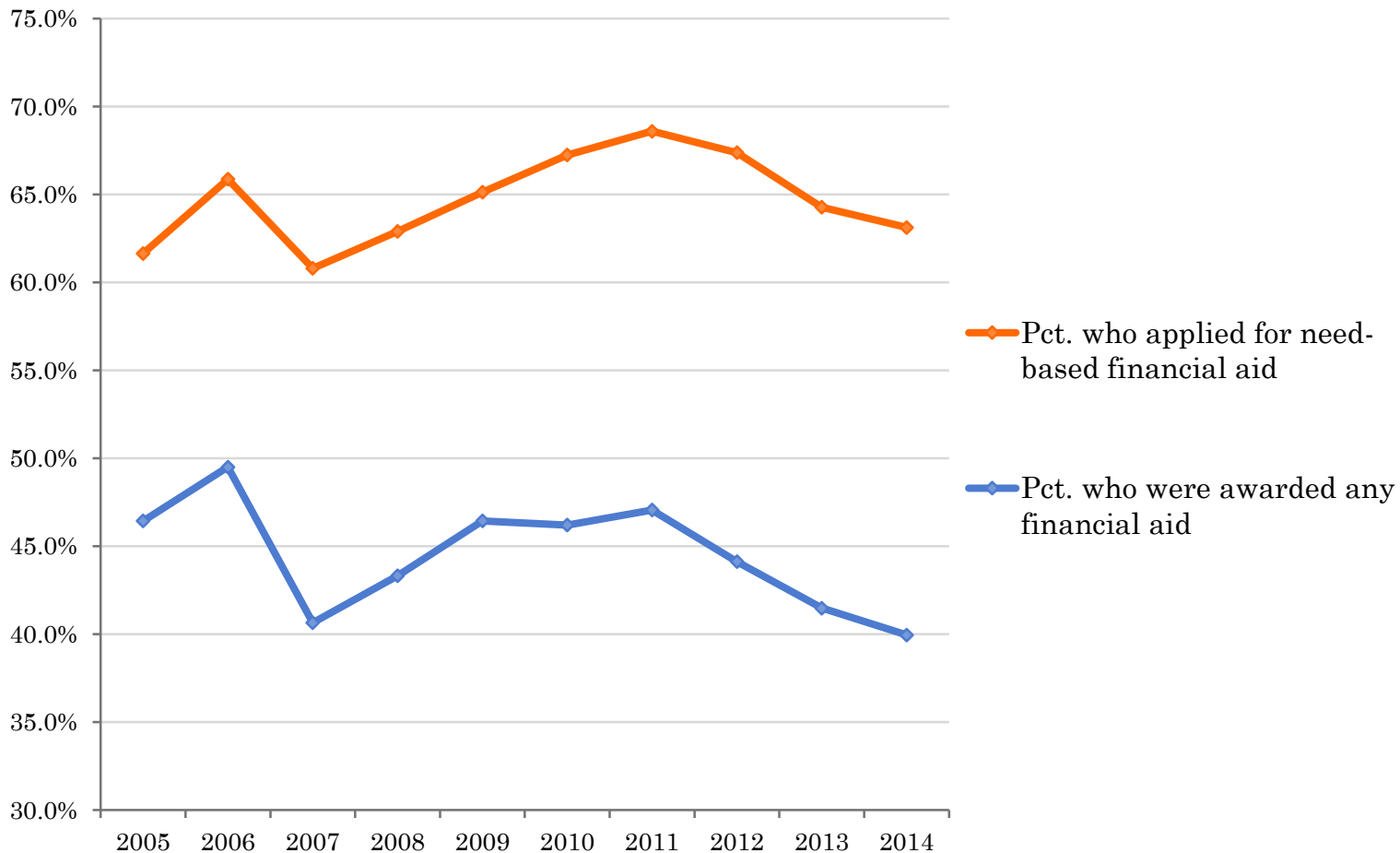
Source: Banner

DIVERSITY: FAMILY EDUCATIONAL BACKGROUND

- Approximately 10% of our students are first-generation
- Beacon survey results show:
 - Two parents who graduated from college: 66.6%
 - One parent who graduated from college: 17.7%
 - Neither parent graduated from college: 15.7%

FINANCIAL AID

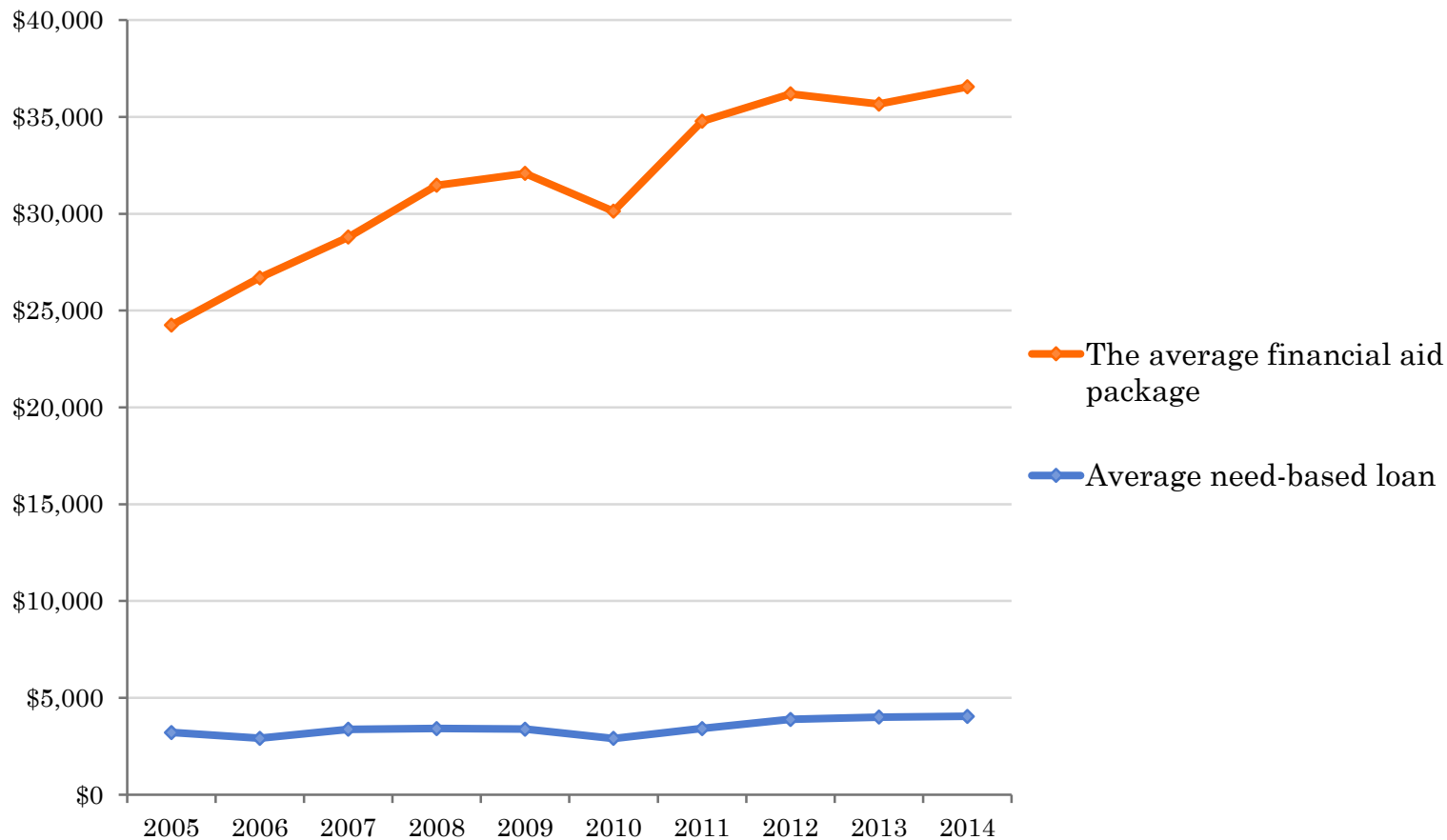
Financial Aid for First-Year Students, 2005-2014



Source: Common Data Set

FINANCIAL AID

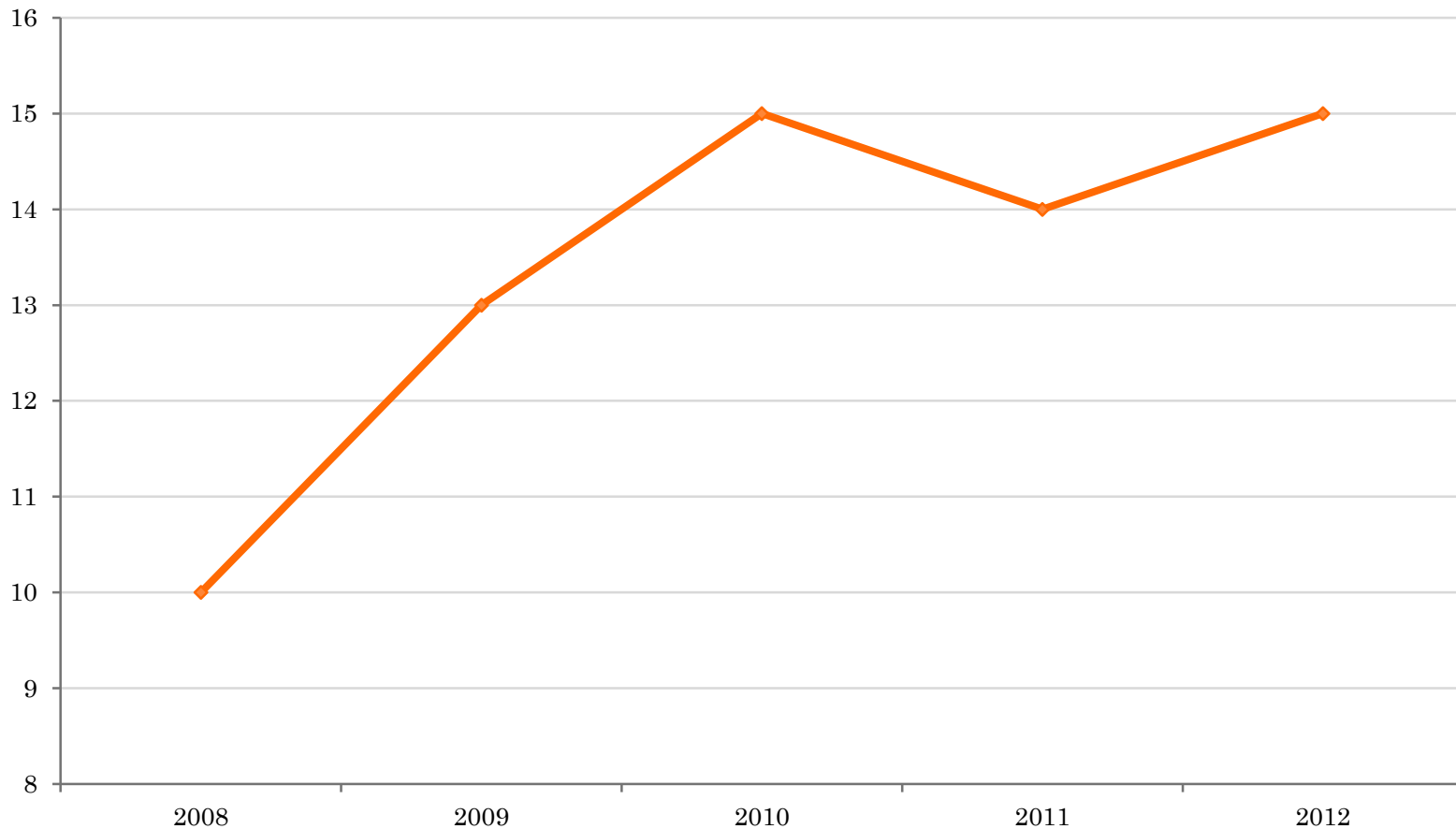
Average Aid Package for First-Year Students (and Proportion of Need-Based Loans), 2005-2014



Source: Common Data Set

DIVERSITY: PELL RECIPIENTS

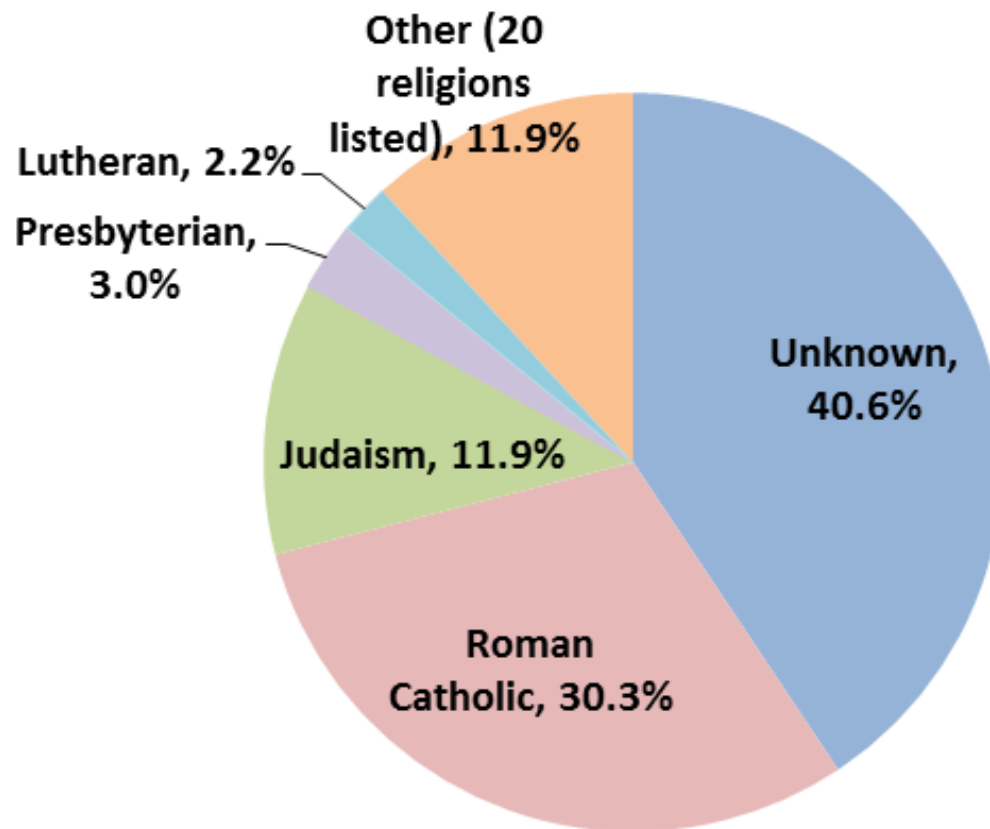
Percent of UG students receiving Pell grants



Source: IPEDS

DIVERSITY: RELIGIOUS AFFILIATION


FIRST-YEAR STUDENTS, FALL 2014



IN THE CLASSROOM

- College = earning power
- Amount of time spent = quality of the outcome
- Wish faculty had more knowledge of technology
- Top 5 majors
 - Finance
 - Mechanical engineering
 - Marketing
 - Accounting
 - Bio engineering

Source: *Generation on a Tightrope* and Banner



HOURS PREPARING FOR CLASS

- In the National Survey of Student Engagement (NSSE), students are asked how many hours per week they spend preparing for class (studying, reading, homework, etc.):

	11+ Hours	16+ Hours	21+ Hours
First Years	79%	55%	33%
Seniors	74%	53%	32%

GPA PERFORMANCE

- Spring 2014 Cumulative GPA
 - First Years: 3.16
 - Second Years: 3.17
 - Third Years: 3.20
 - Fourth Years: 3.23
- In the Spring of 2014, 54 students had a cumulative GPA less than 2.0
(1.2% of undergraduates)



MOST COMMONLY REPEATED COURSES

Course	Percent of Students who Repeat Course	Avg Attempts for Those who Repeat
Math 22	6.4%	2.1
Economics 1	5.8%	2.7
Math 23	5.3%	2.4
Math 205	4.2%	2.3
Accounting 152	4.1%	2.6
Chemistry 110	3.8%	2.1
Math 21	3.4%	2.3
Accounting 151	2.9%	2.2
Finance 125	2.9%	2.5
Psychology 1	2.4%	2.0

Source: Banner



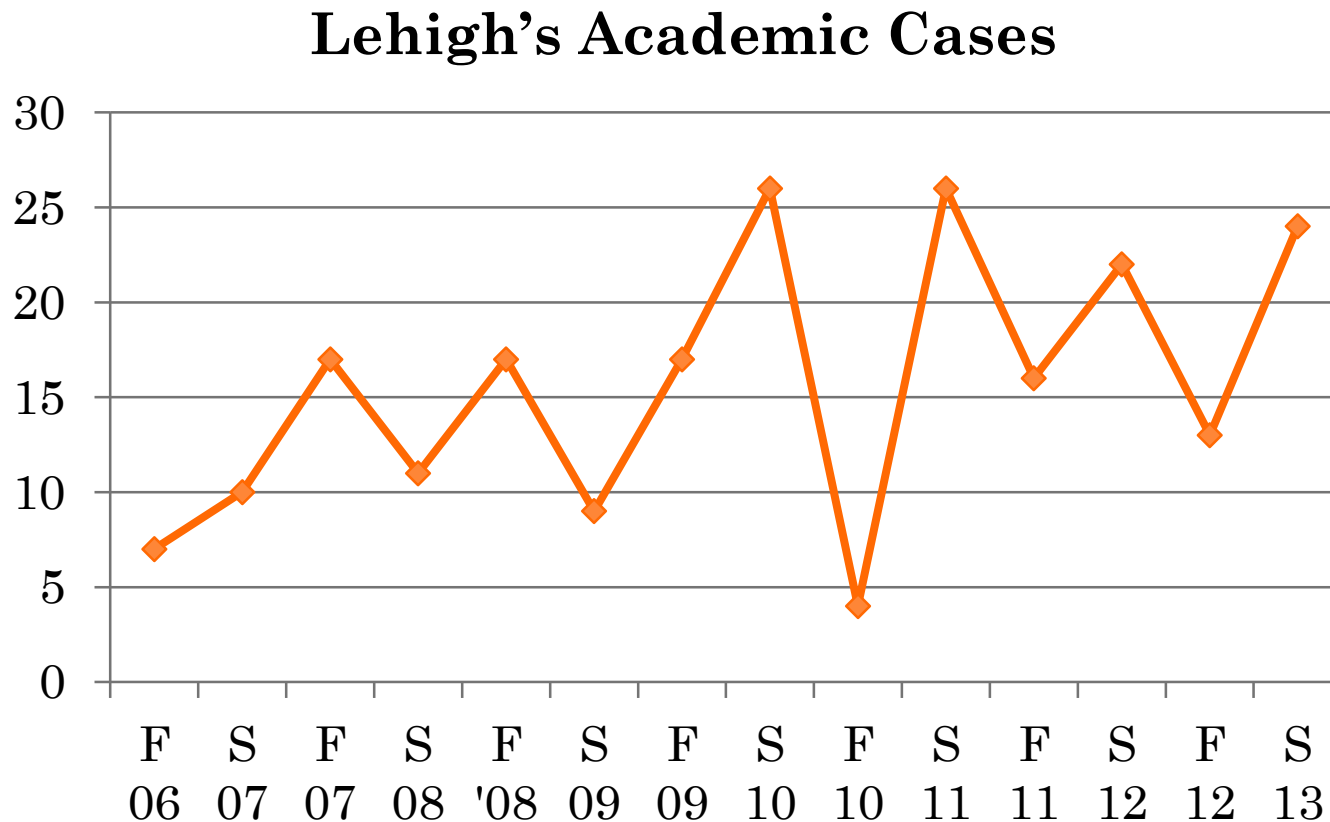
TUTORING

- Center for Academic Success
 - **18% of undergraduates** received tutoring in AY2013-14
 - 32% of first year students; 14% of upperclassmen
 - 23% of women; 14% of men
 - 21% of RCEAS students; 19% of CBE students; 16% of CAS students
- Other Campus Tutoring
 - The Math and Writing Center
 - Math Help Center



TO SHARE OR NOT TO SHARE? WHO KNOWS?!?!

- Plagiarism incidents up at 57% of schools surveyed



Source: *Generation on a Tightrope* and Dean Mulvihill

OUTSIDE THE CLASSROOM

- Tribe
 - Friends, family, neighbors, acquaintances
 - They stay connected to them 24/7
 - They are alone but together at the same time
- Tech savvy
 - Facebook is still the website of choice
- Undergrads struggle more with face to face interactions than electronic communication

Extracurricular Involvement

Hours spent per week participating in extracurricular activities:

First Years		Lehigh	Peer	Carnegie	All
	6+ Hours	65%	45%	32%	31%
	11+ Hours	42%	24%	17%	17%
Seniors		Lehigh	Peer	Carnegie	All
	6+ Hours	60%	47%	26%	26%
	11+ Hours	38%	26%	14%	15%

Working for Pay

- What percent of students work for pay on campus?

	Lehigh	Peer	Carnegie	All
First Years	35%	27%	17%	19%
Seniors	55%	41%	26%	27%

- What percent of students work for pay off campus?


	Lehigh	Peer	Carnegie	All
First Years	8%	13%	27%	30%
Seniors	19%	34%	53%	56%



ADDITIONAL ISSUES

- 68% said they are politically unengaged
- Issue oriented
- Most frequent issues for student protest?
 - Tuition costs
 - Sexual orientation and gay rights
 - Facilities
 - Diversity/multiculturalism & parking

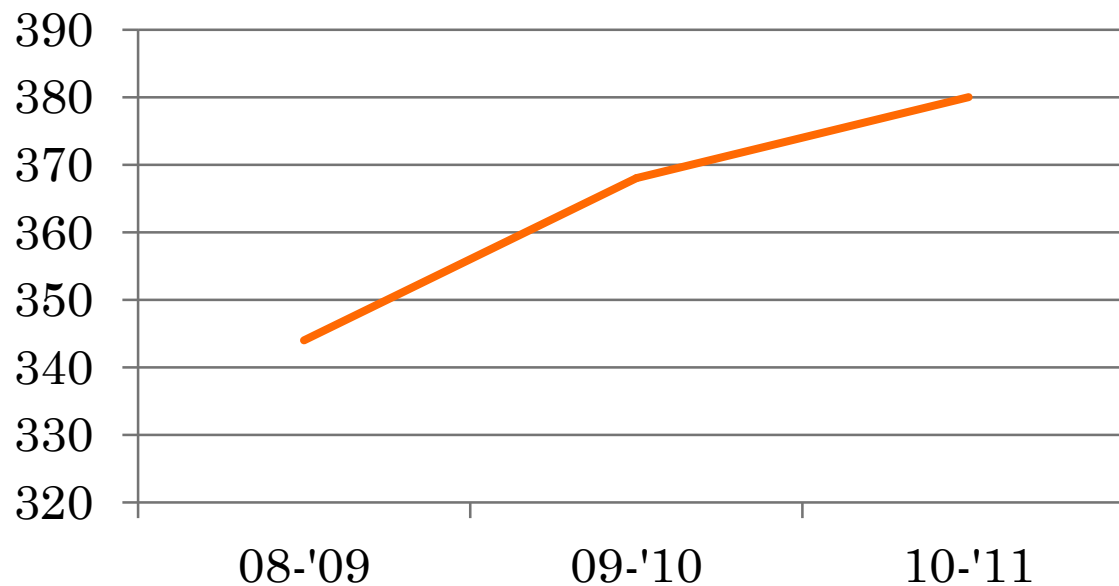
Source: *Generation on a Tightrope*



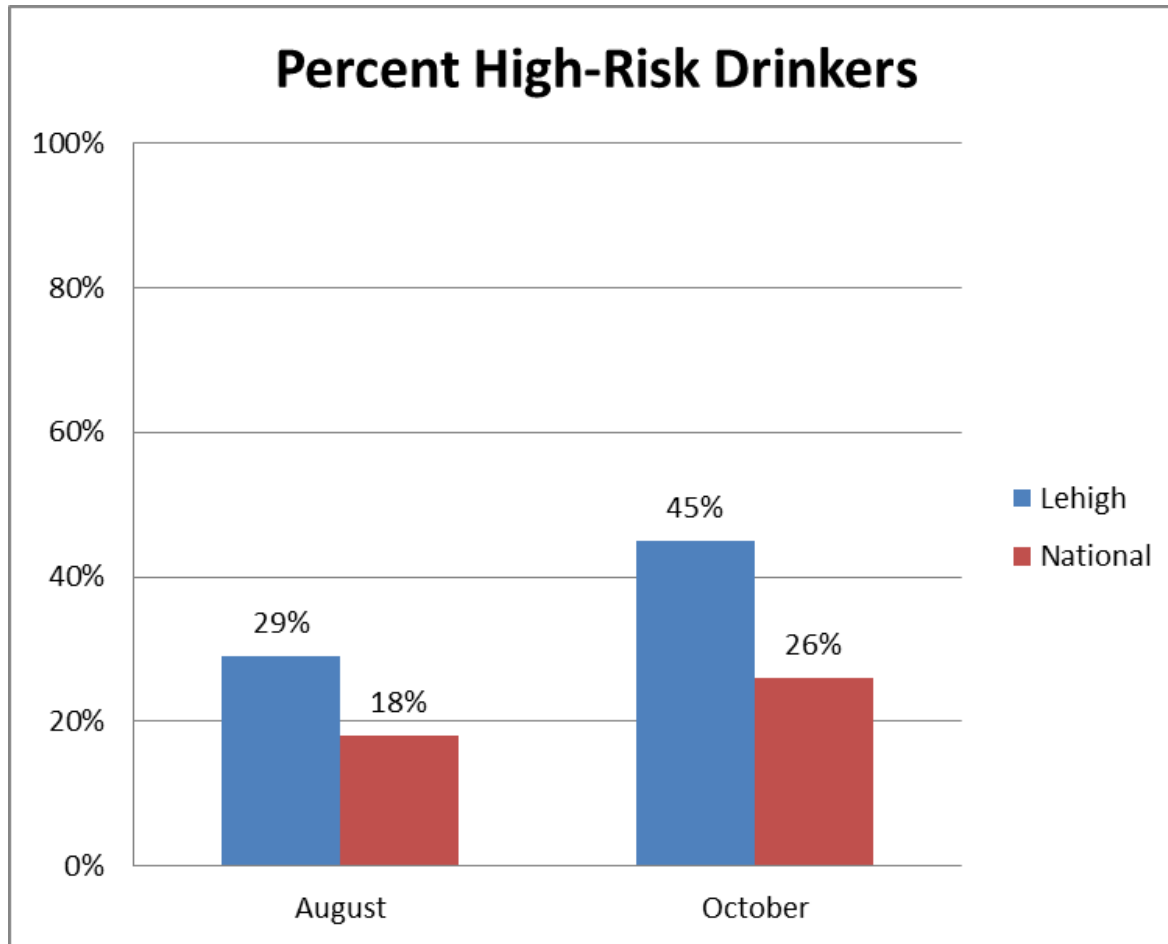
ISSUES ON THE RISE....

- Mental Health

Lehigh Counseling Center Visits

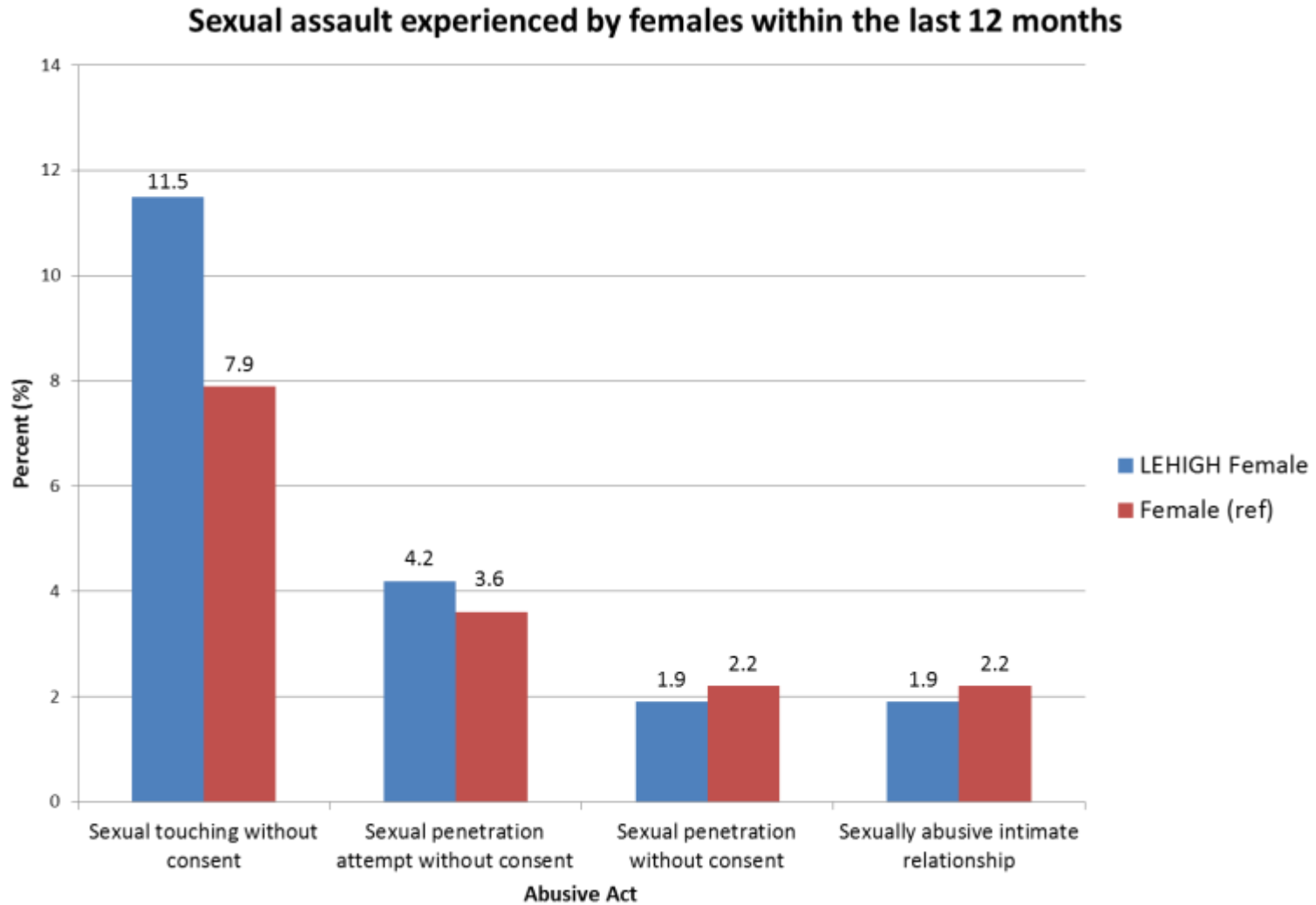


○ Alcohol Use



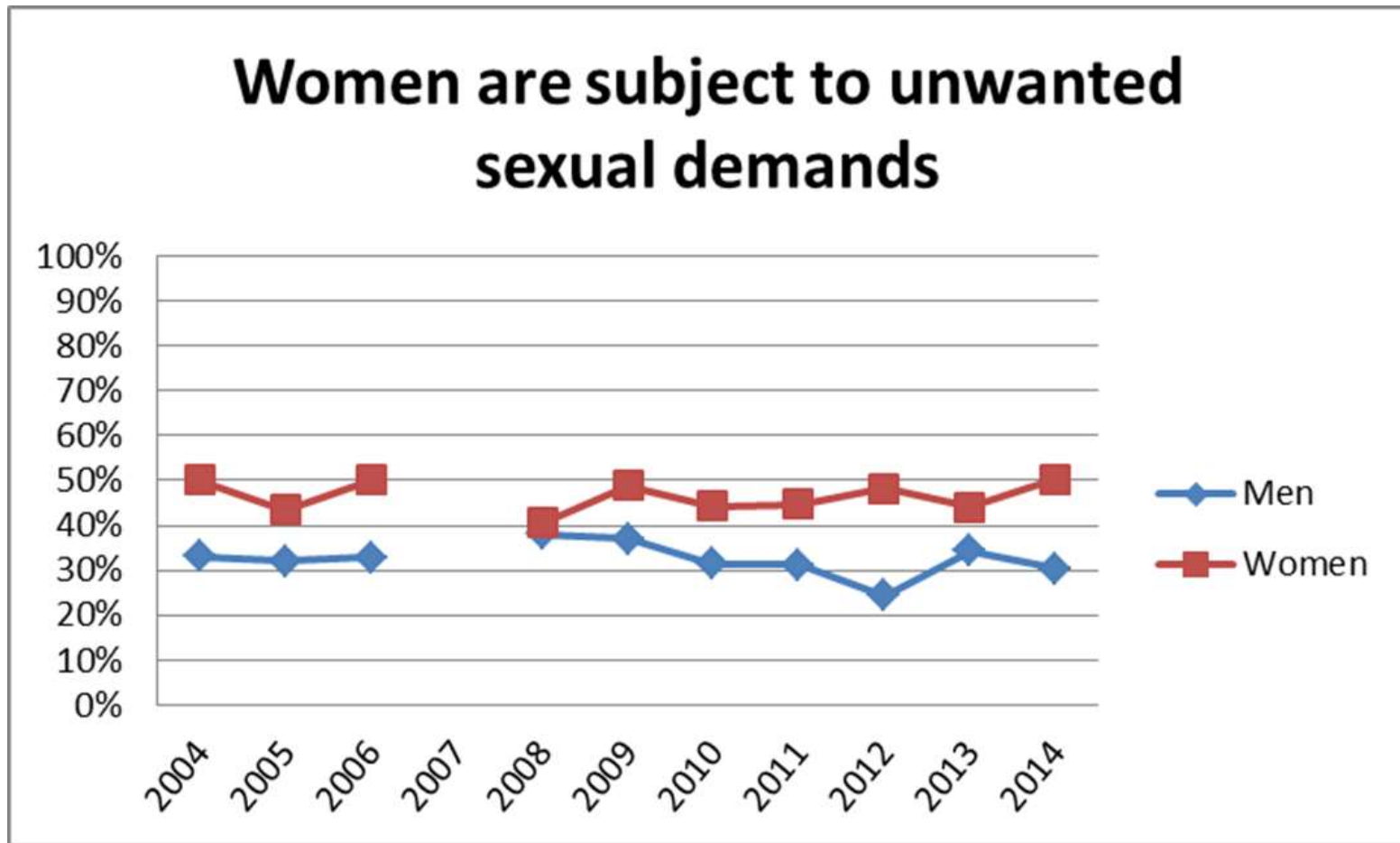
High Risk Drinker:
Those who have reported at least one high-risk drinking episode in the two weeks prior to being surveyed. An episode consists of having 5 or more drinks in one sitting.

Sexual Assault



Source: Undergraduate NCHA, 2014

STUDENT PERCEPTIONS OF CAMPUS CLIMATE



Values represent the percent of respondents who “agree” or “strongly agree with statement.”

Source: Senior Survey 2014

PARENTS/FAMILIES

- 2 out of 5 (41%) are in touch with parents by phone, email, text or visit at least daily.
- 1 in 5 -three or more times a day
- 37% consult parents before academic decision
- 20% consult on social decisions
- 58% share intimate details about social and romantic relationships



MORE FAMILY STUFF...

- Students have asked families to intervene on:
- 27% academic matter
- 21% with college administrators
- 27% with employers
- 20% with roommates!

Source: *Generation on a Tightrope*



MULTICULTURALISM

- Most diverse college generation in the history of the US.
- Views on race and relationships among the races are viewed more positively.
- Media has exposed them to different people
- Greater diversity within groups
- Social class is on the rise as one of the most pressing diversity issues as well as LGBTQIA

Source: *Generation on a Tightrope*

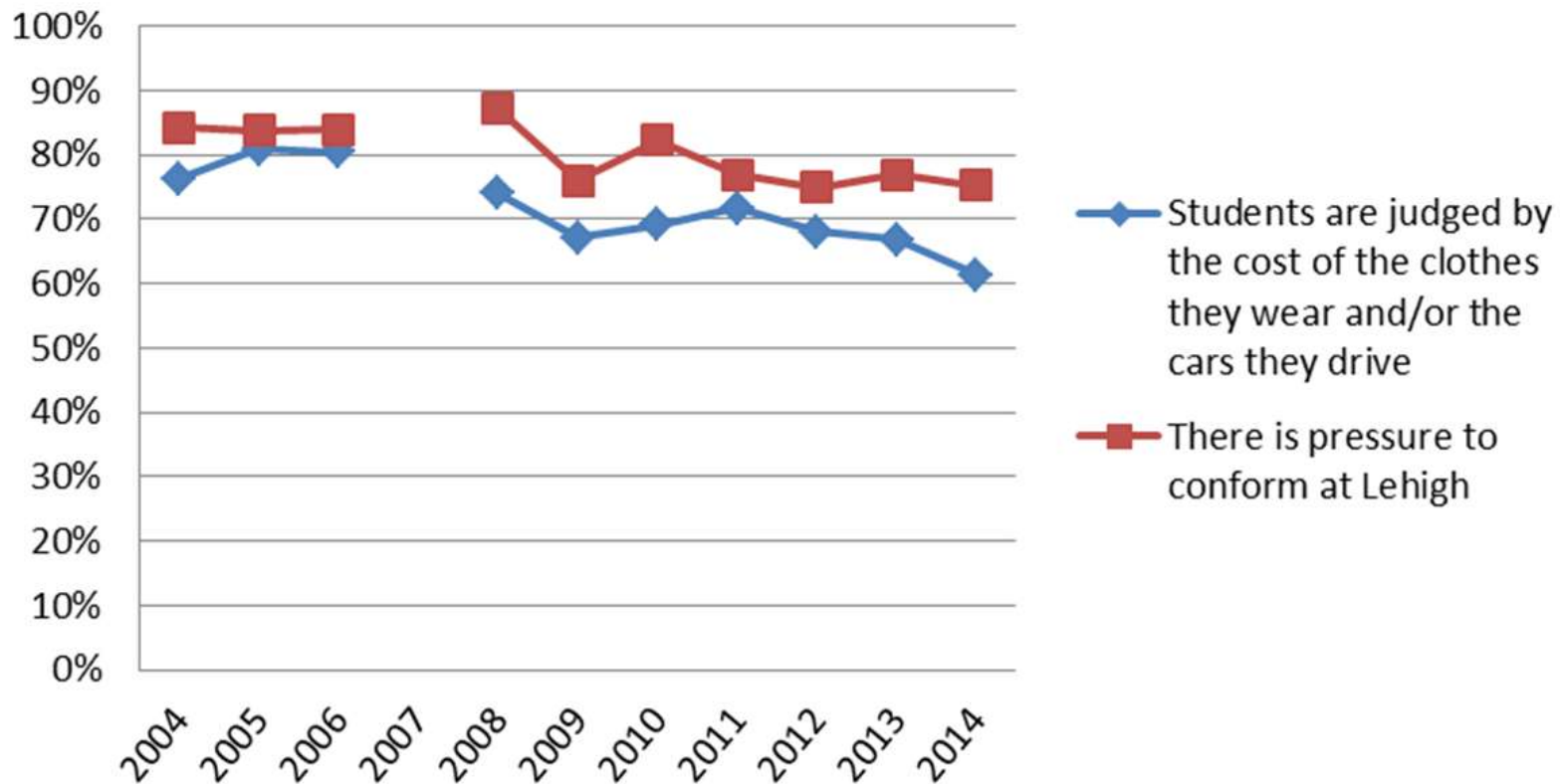


CAMPUS CLIMATE

- On the Senior Survey, students are how comfortable they are with the climate at Lehigh. In 2014:
 - Very Comfortable: 20.6% of respondents
 - Comfortable: 44.3% of respondents
 - Unsure: 16.3% of respondents
 - Uncomfortable: 14.6% of respondents
 - Very Uncomfortable: 4.3% of respondents

CAMPUS CLIMATE

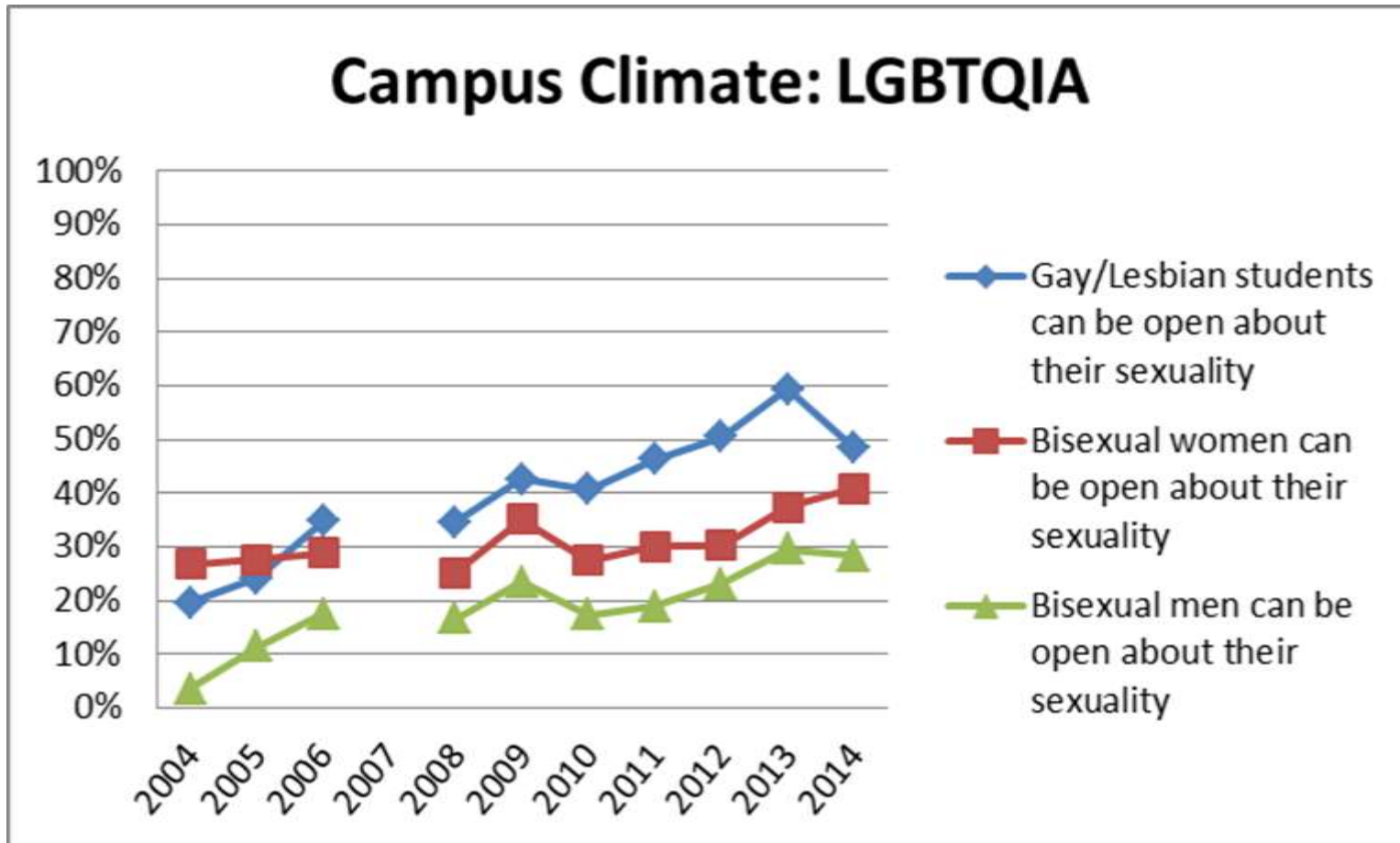
Conformity



Values represent the percent of respondents who “agree” or “strongly agree with statement.

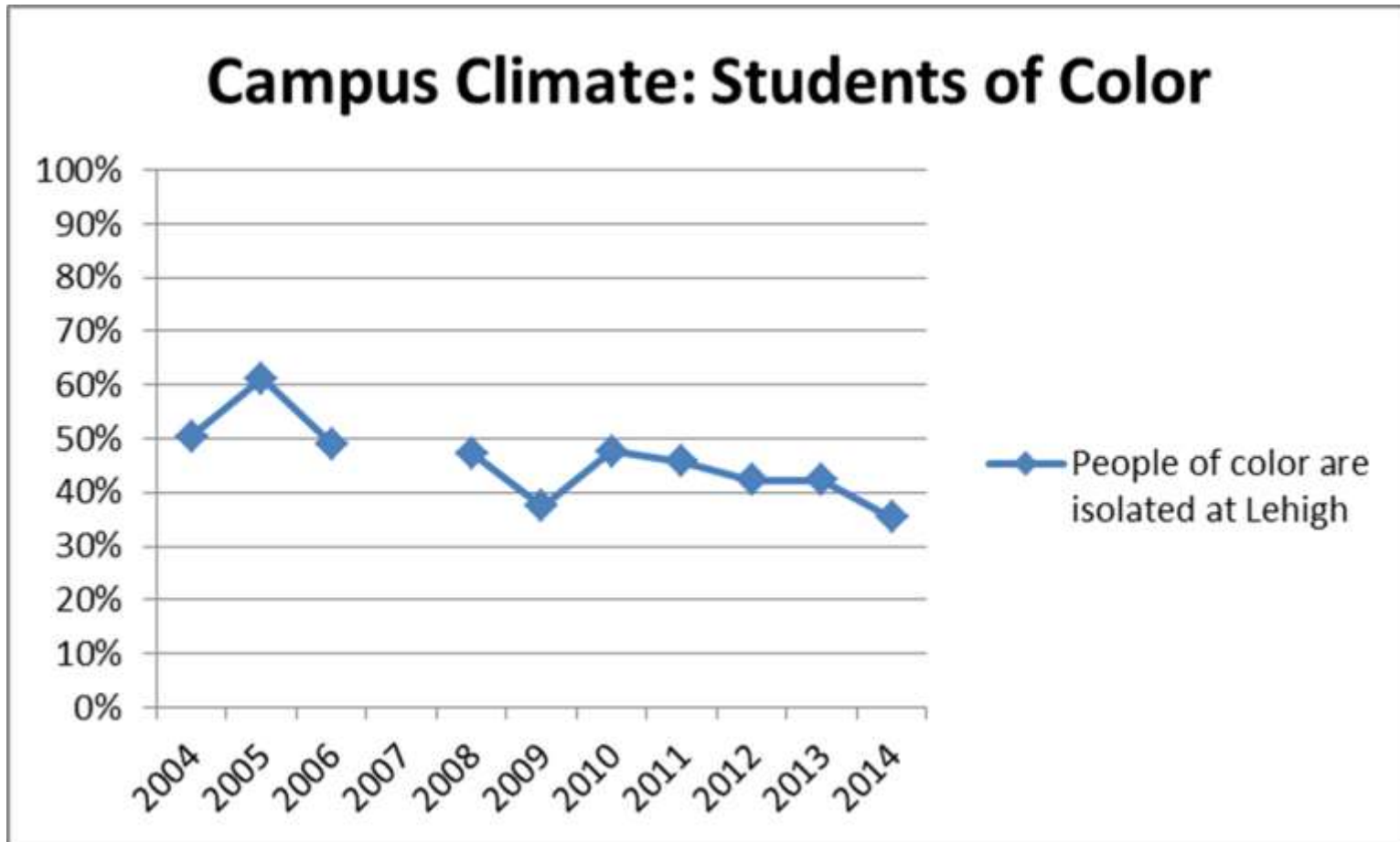
Source: Senior Survey 2014

CAMPUS CLIMATE



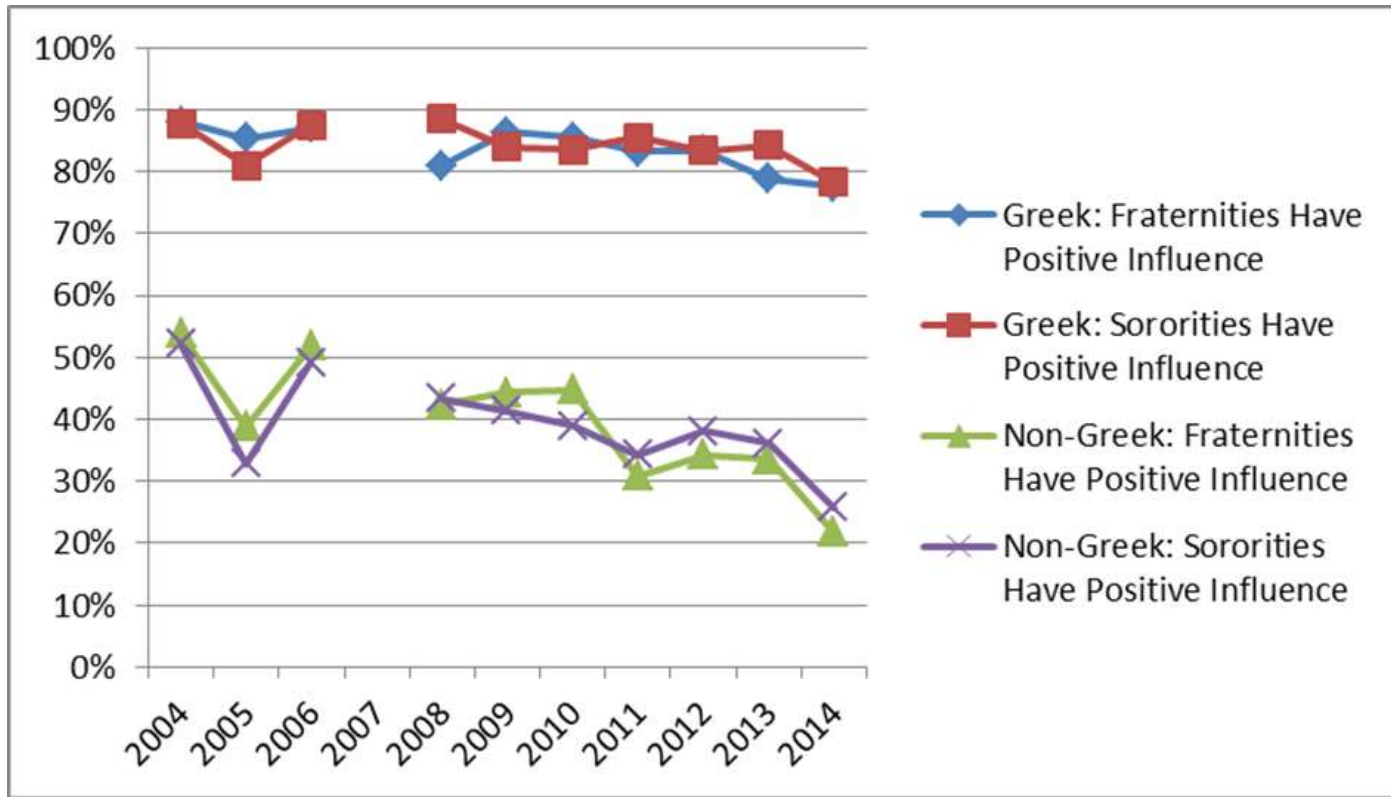
Values represent the percent of respondents who “agree” or “strongly agree with statement.

CAMPUS CLIMATE



Values represent the percent of respondents who “agree” or “strongly agree with statement.

CAMPUS CLIMATE: GREEK INFLUENCE



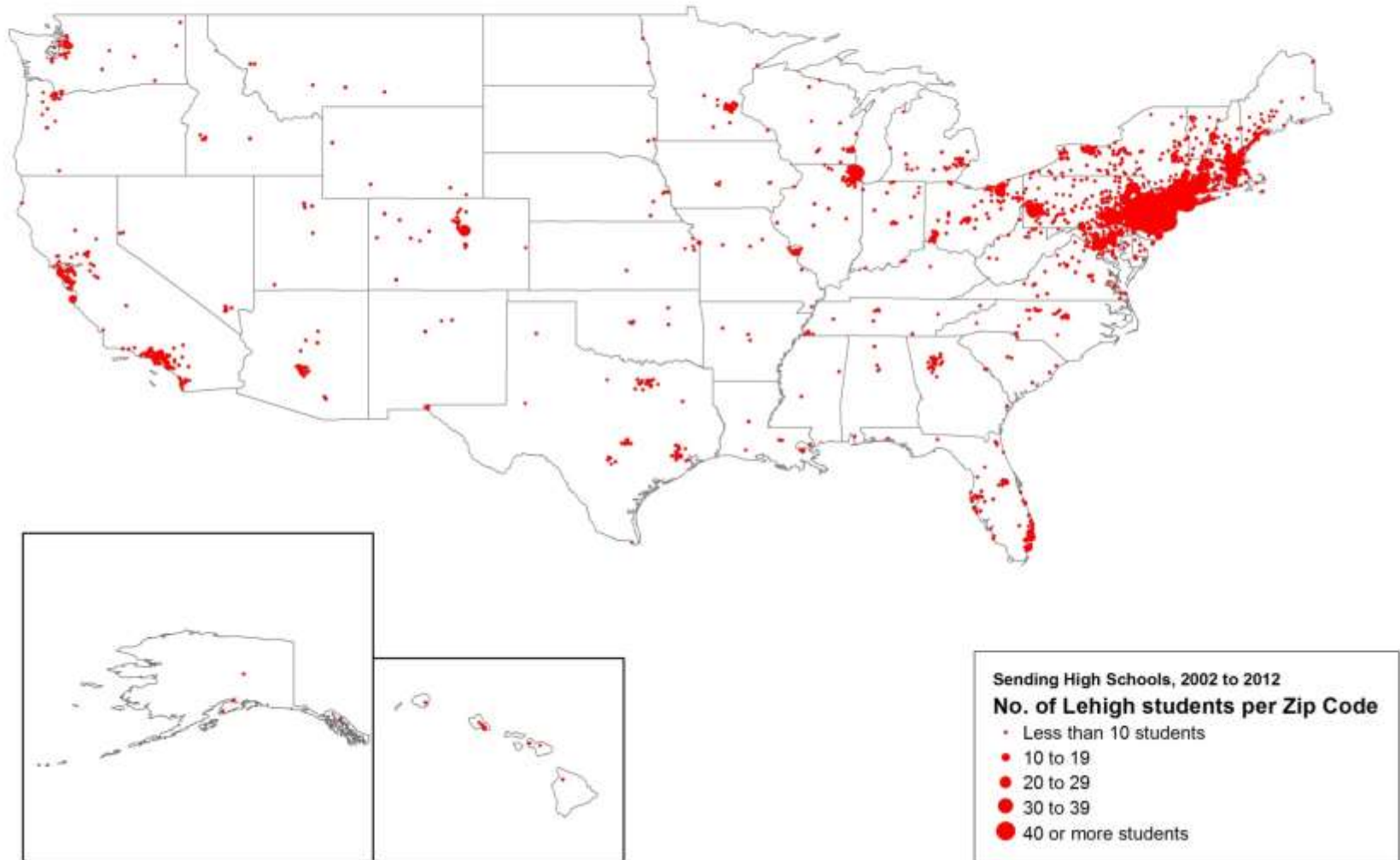
- In 2004, 52.2% of **non-Greek** respondents indicated that sororities had a “very positive” or “somewhat positive” influence, compared to 25.8% in 2014
- In 2004, 53.9% of **non-Greek** respondents indicated that fraternities had a “very positive” or “somewhat positive” influence, compared to 21.7% in 2014

FUTURE STUDENT BODY

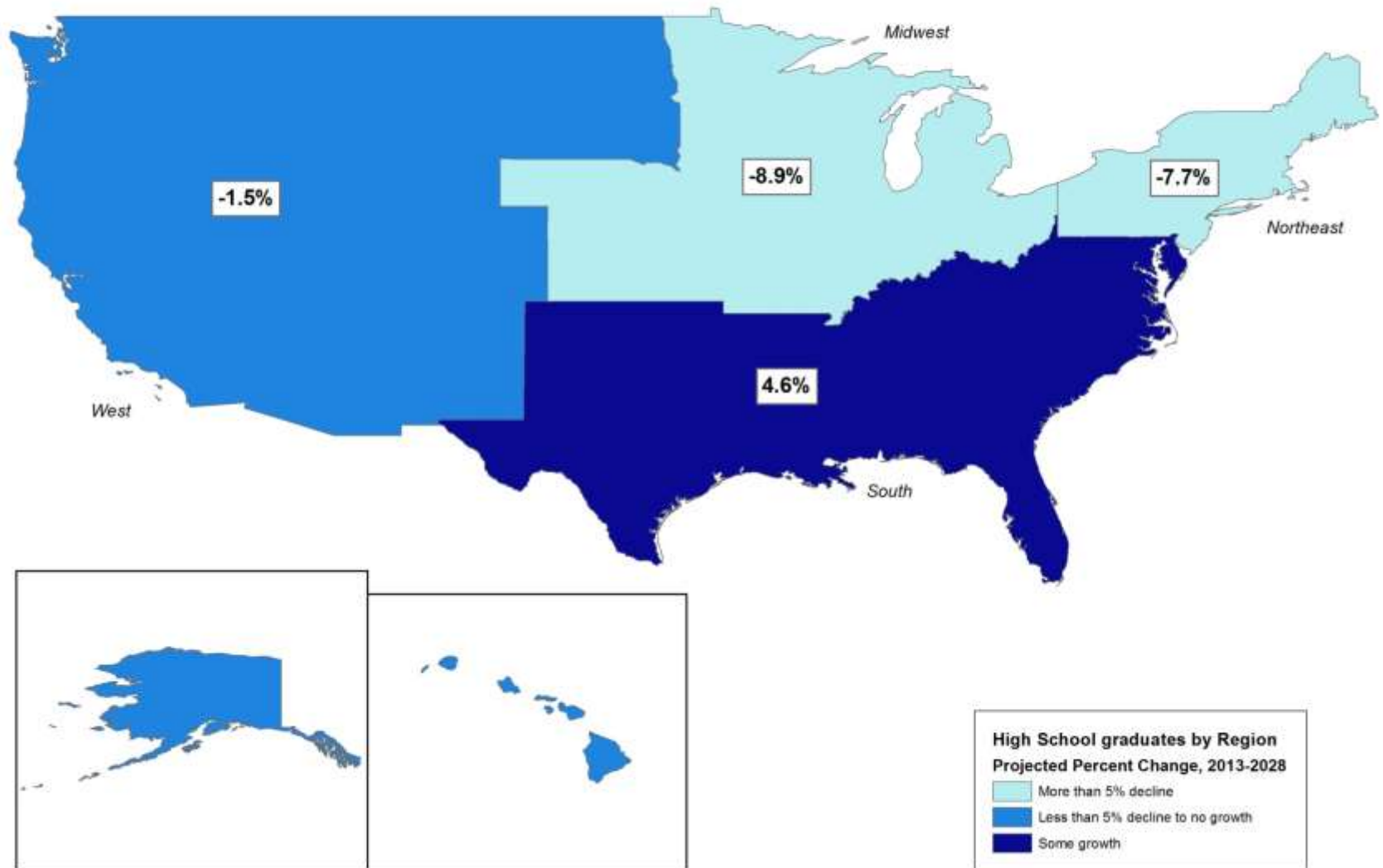
- Geography
- Racial and Ethnic backgrounds
- Class and Income levels



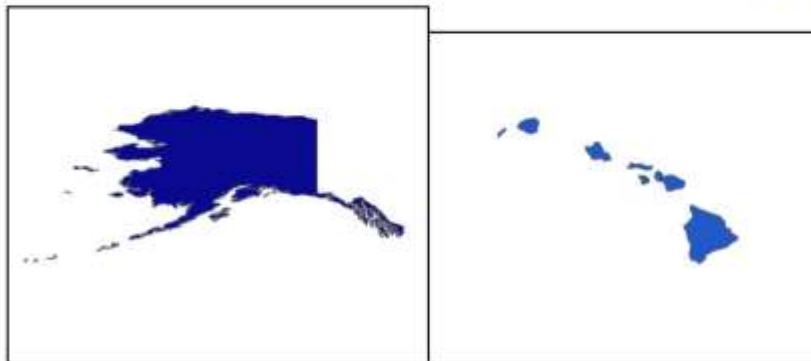
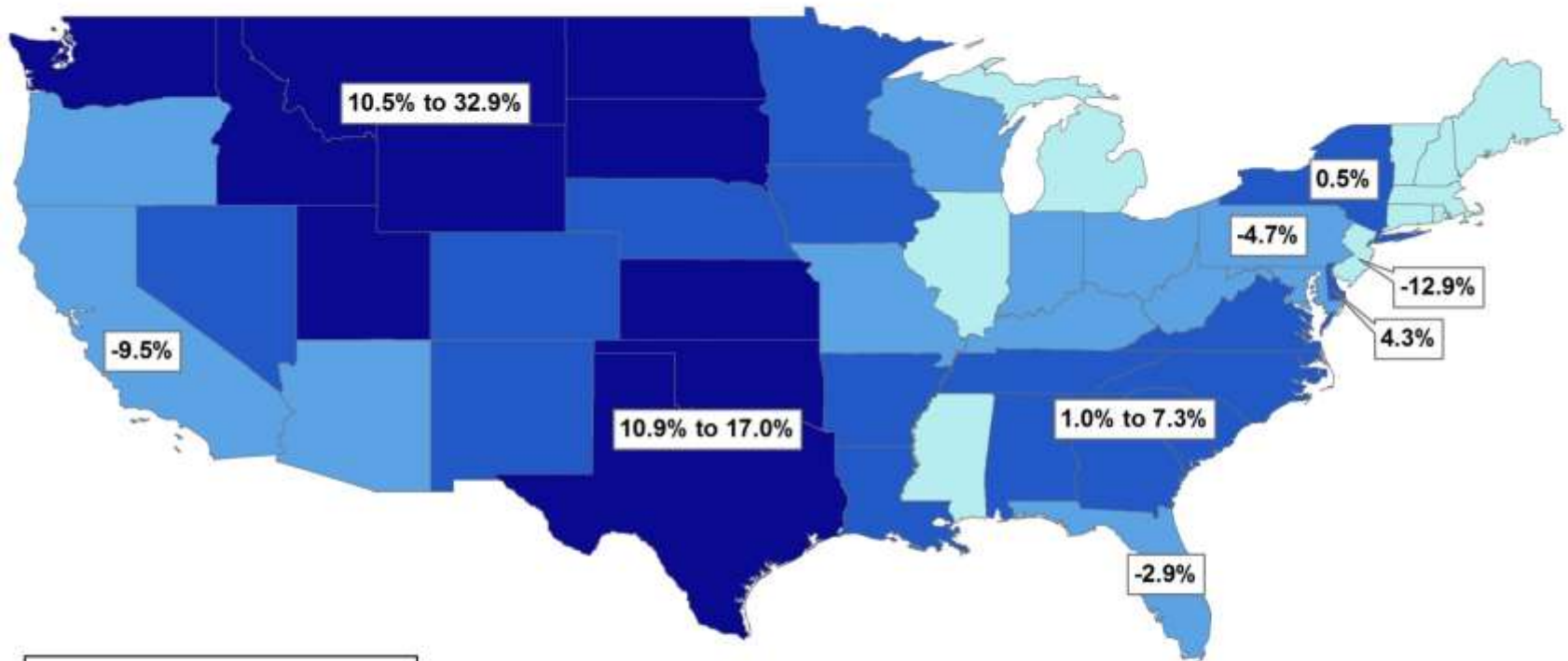
Lehigh's Sending High Schools from 2002 to 2012



Total High School Graduates (Public + Private) by Region,
Projected Percent Change from 2013 to 2028



Total High School Graduates (Public + Private) by State,
Projected Percent Change from 2013 to 2028



High School graduates by State
Projected Percent Change, 2013-2028

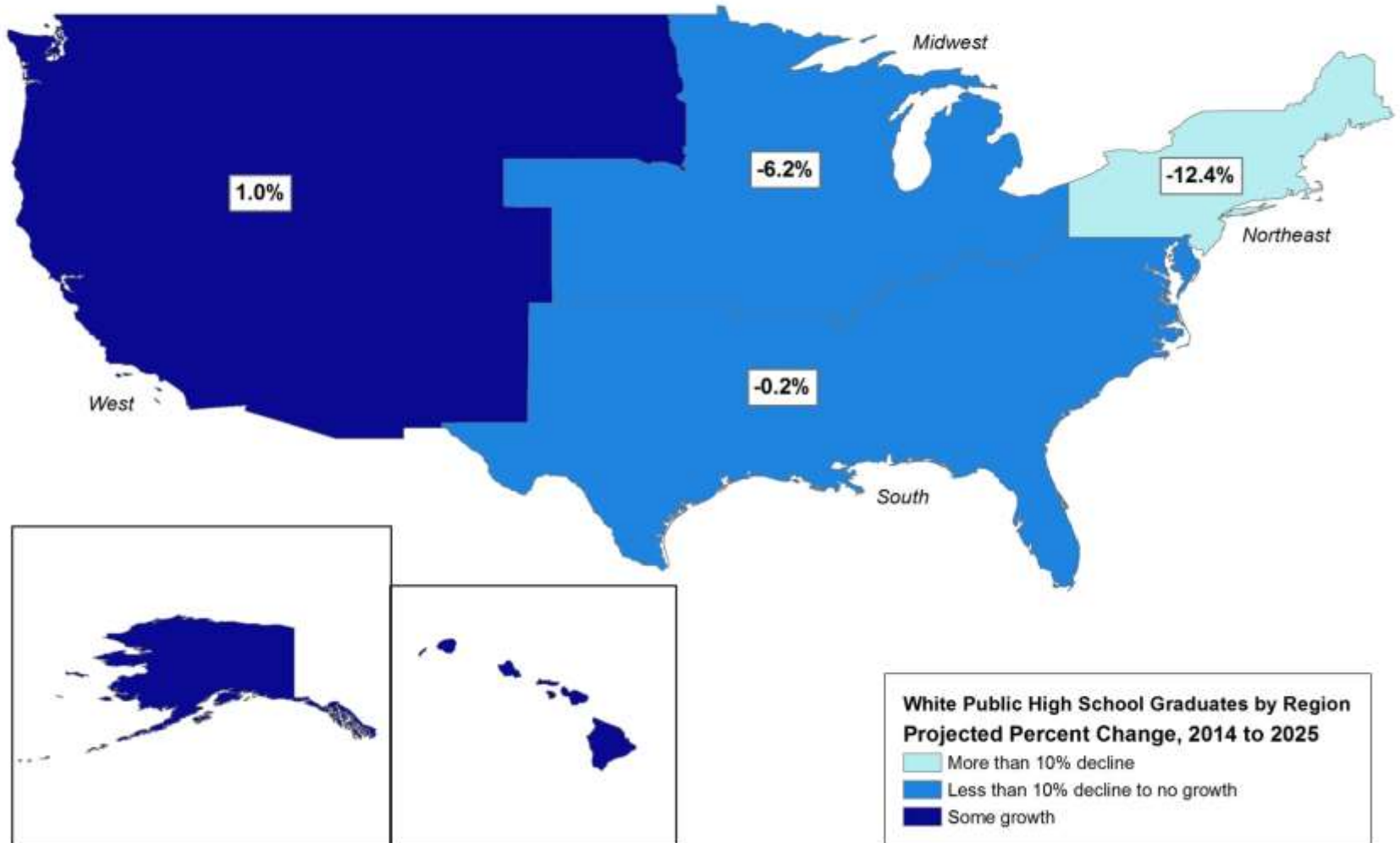
- More than 10% decline
 Less than 10% decline to no growth
 Up to 10% growth
 More than 10% growth

RETENTION RATES BY GEOGRAPHY

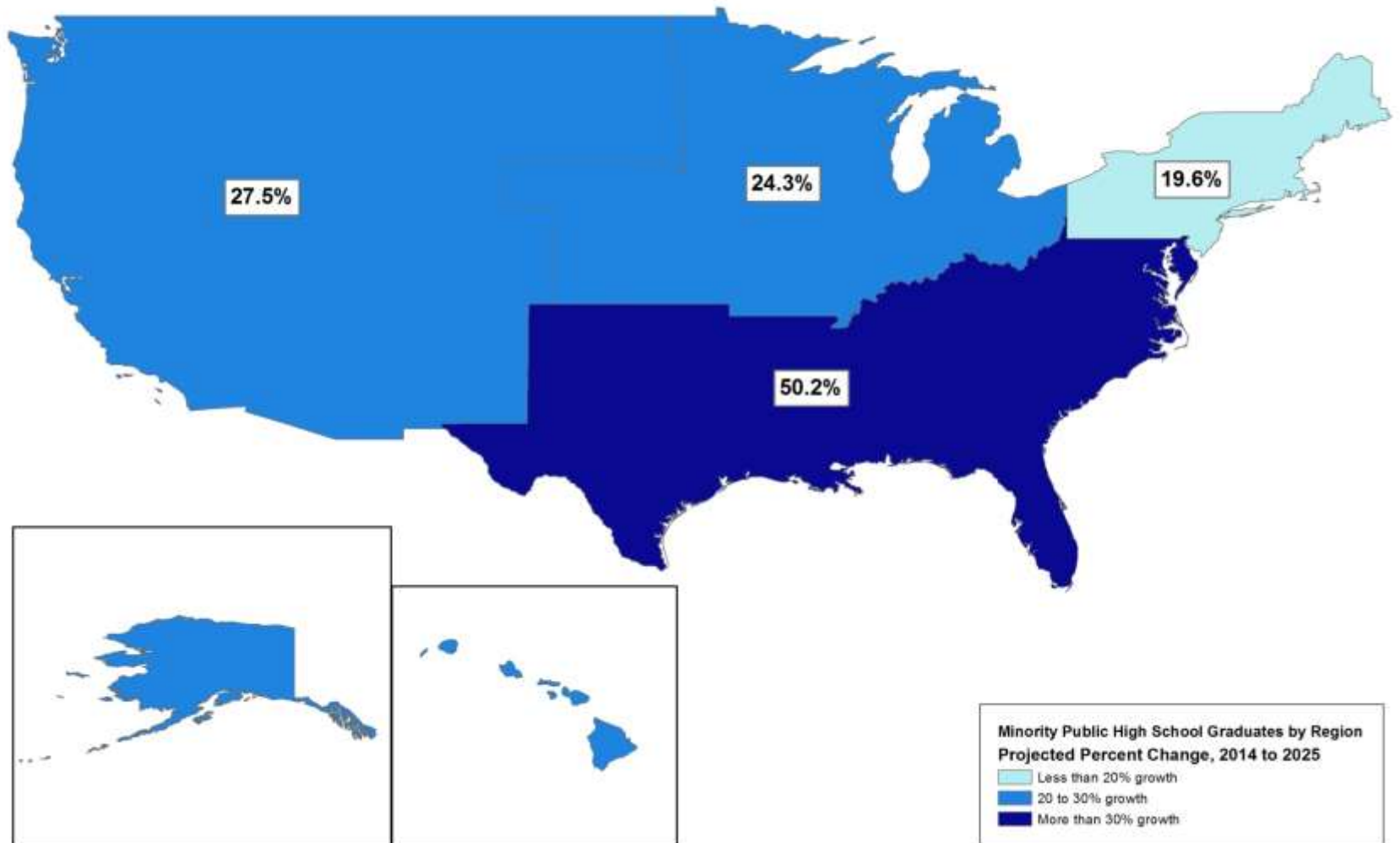
- 1st to 2nd Year Retention Rates (2003-2011)
 - Average = 93.7%
 - By Region:
 - Northeast = 94.2%
 - South = 93.8%
 - Midwest = 93.4%
 - **International = 89.4%**
 - **West = 87.1%**



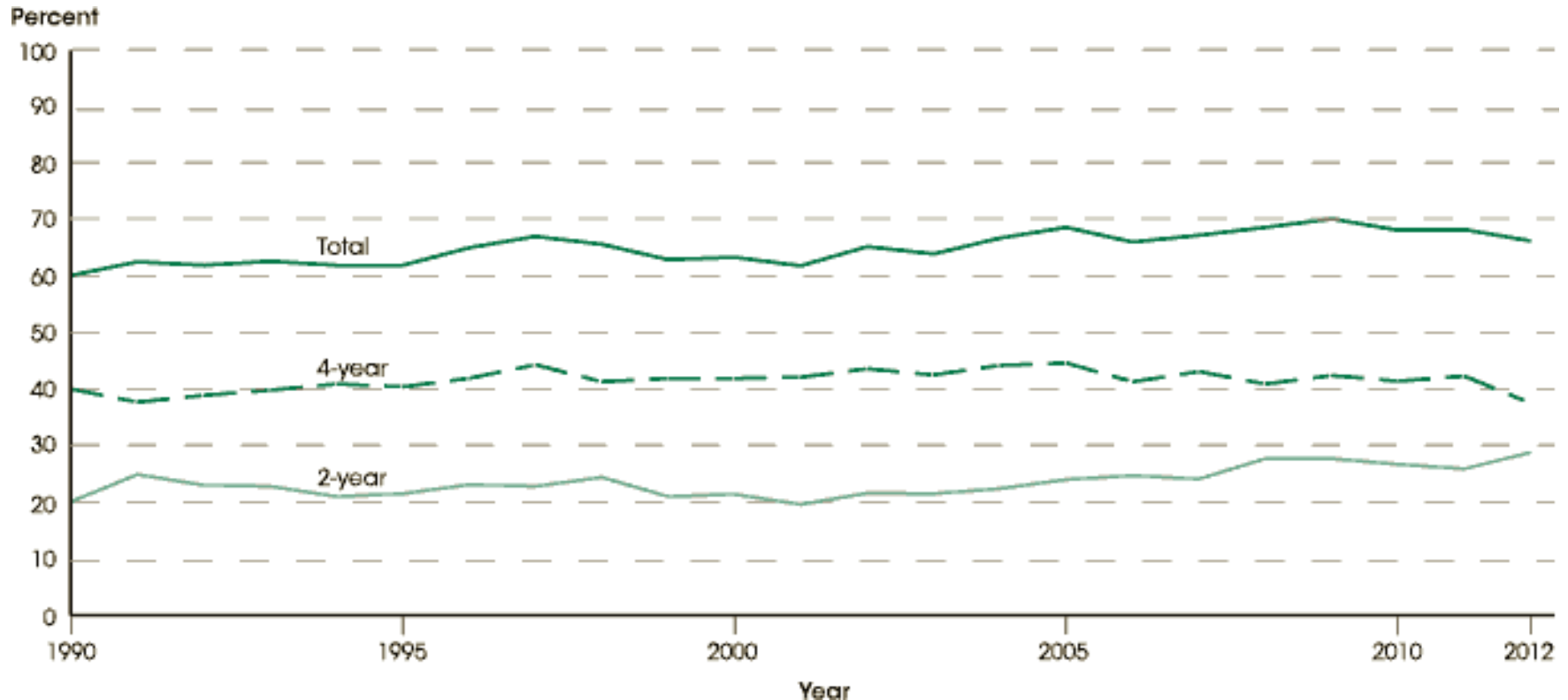
White Public High School Graduates by Region, Projected Percent Change from 2014 to 2025



Minority Public High School Graduates by Region,
Projected Percent Change from 2014 to 2025



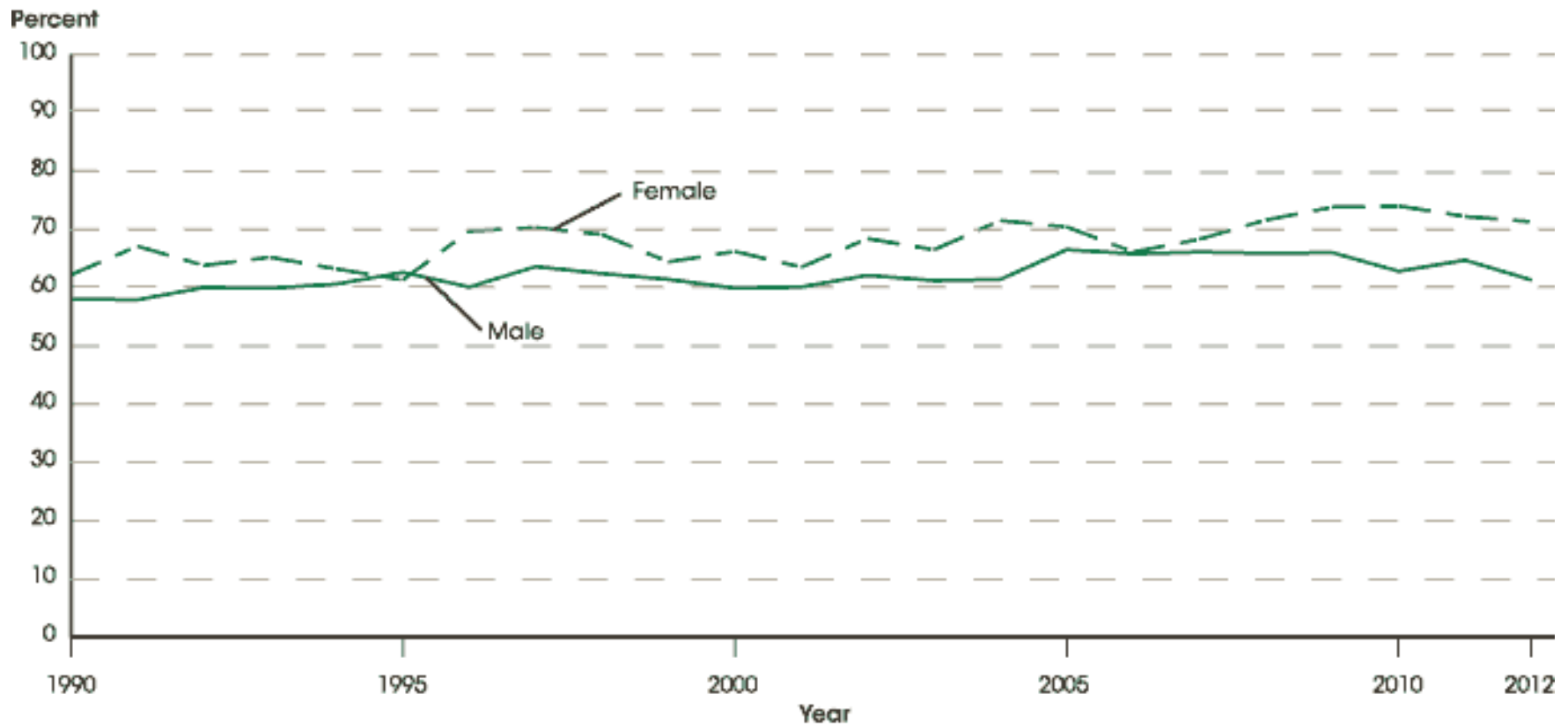
PERCENTAGE OF HIGH SCHOOL COMPLETERS WHO WERE ENROLLED IN 2-OR 4-YEAR COLLEGES THE OCTOBER IMMEDIATELY FOLLOWING HIGH SCHOOL COMPLETION, BY LEVEL OF INSTITUTION: 1990-2012



Source: U.S. Department of Education, *The Condition of Education 2014*



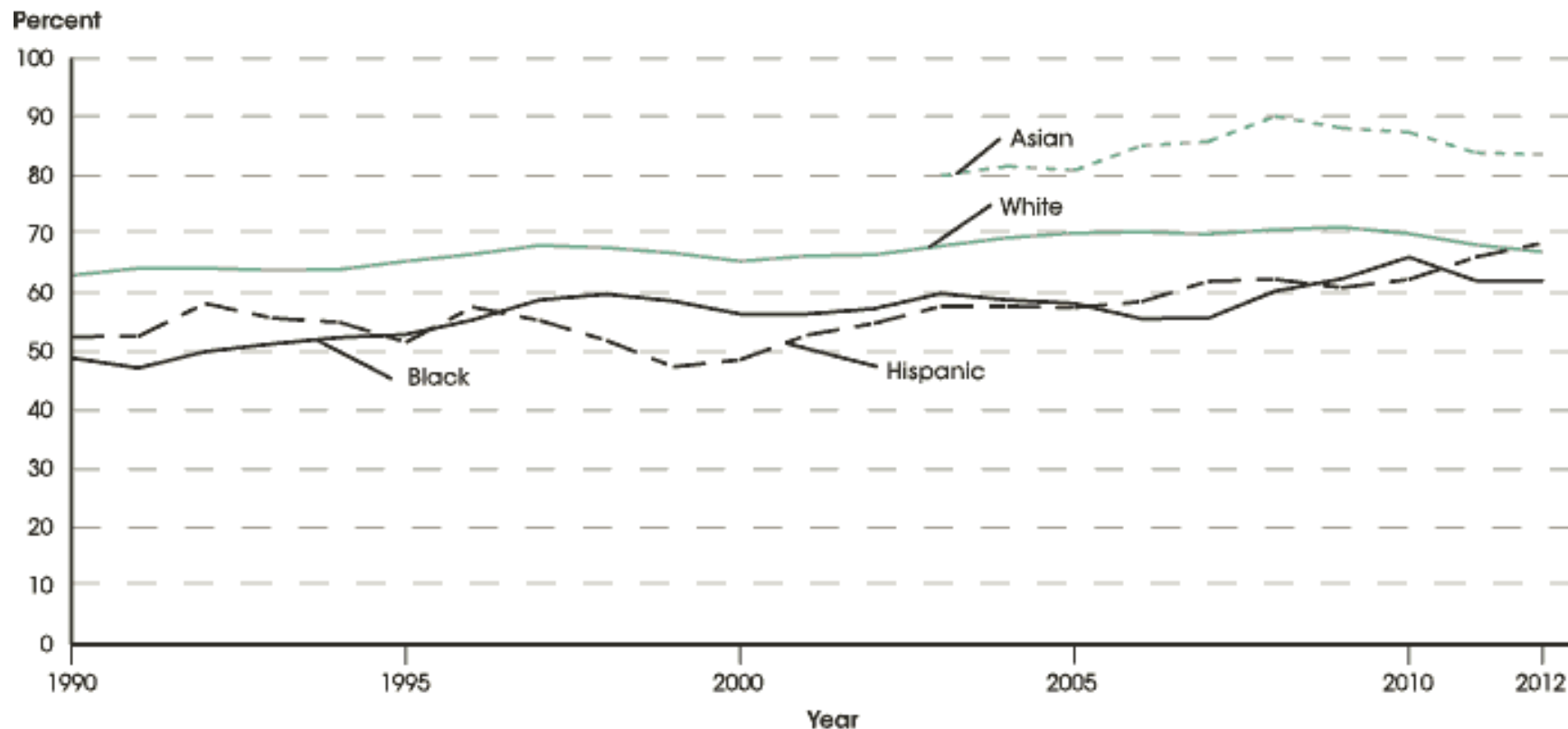
PERCENTAGE OF HIGH SCHOOL COMPLETERS WHO WERE ENROLLED IN 2- OR 4-YEAR COLLEGES THE OCTOBER IMMEDIATELY FOLLOWING HIGH SCHOOL COMPLETION, BY GENDER: 1990-2012



Source: U.S. Department of Education, *The Condition of Education 2014*



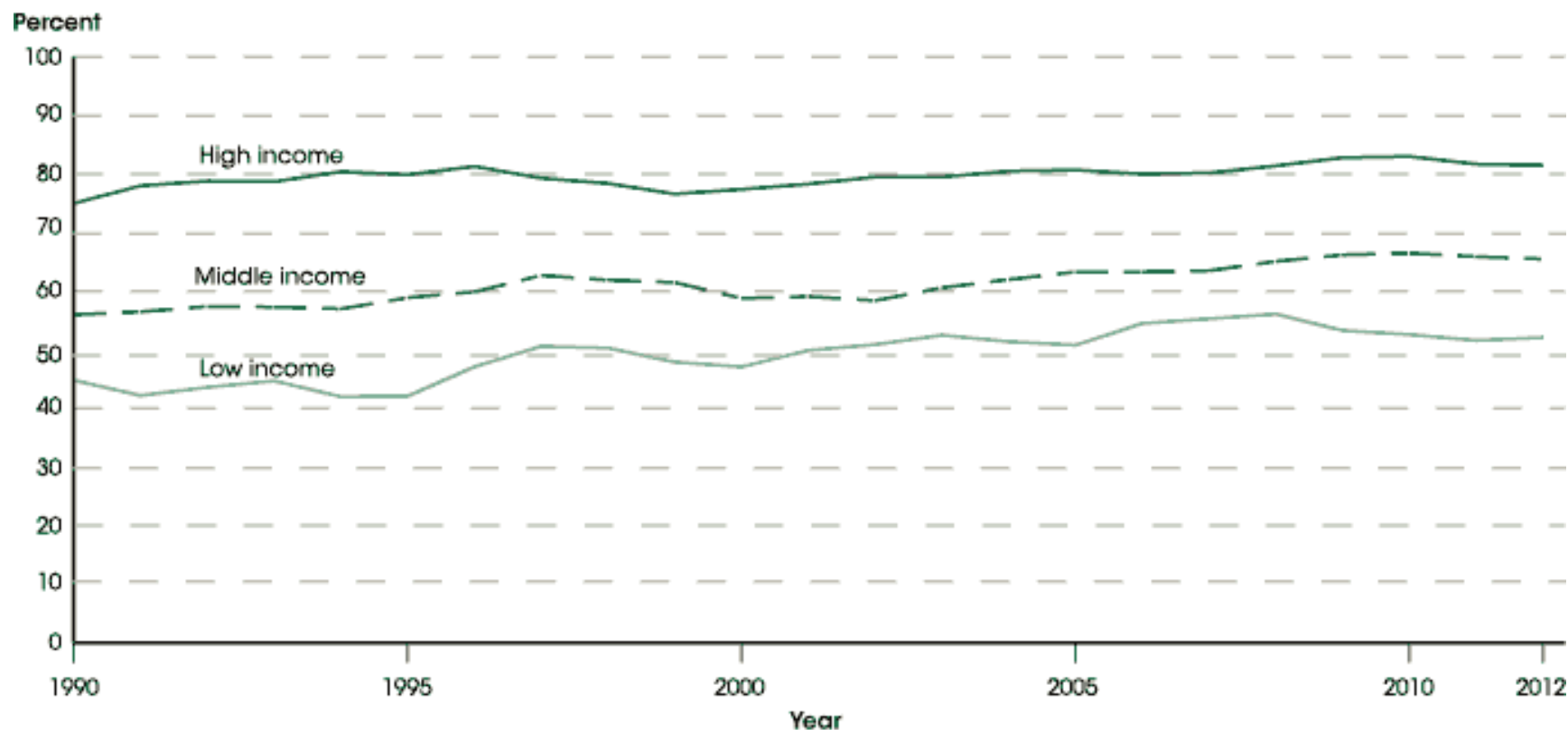
PERCENTAGE OF HIGH SCHOOL COMPLETERS WHO WERE ENROLLED IN 2- OR 4-YEAR COLLEGES THE OCTOBER IMMEDIATELY FOLLOWING HIGH SCHOOL COMPLETION, BY RACE & ETHNICITY:1990-2012



Source: U.S. Department of Education, *The Condition of Education 2014*



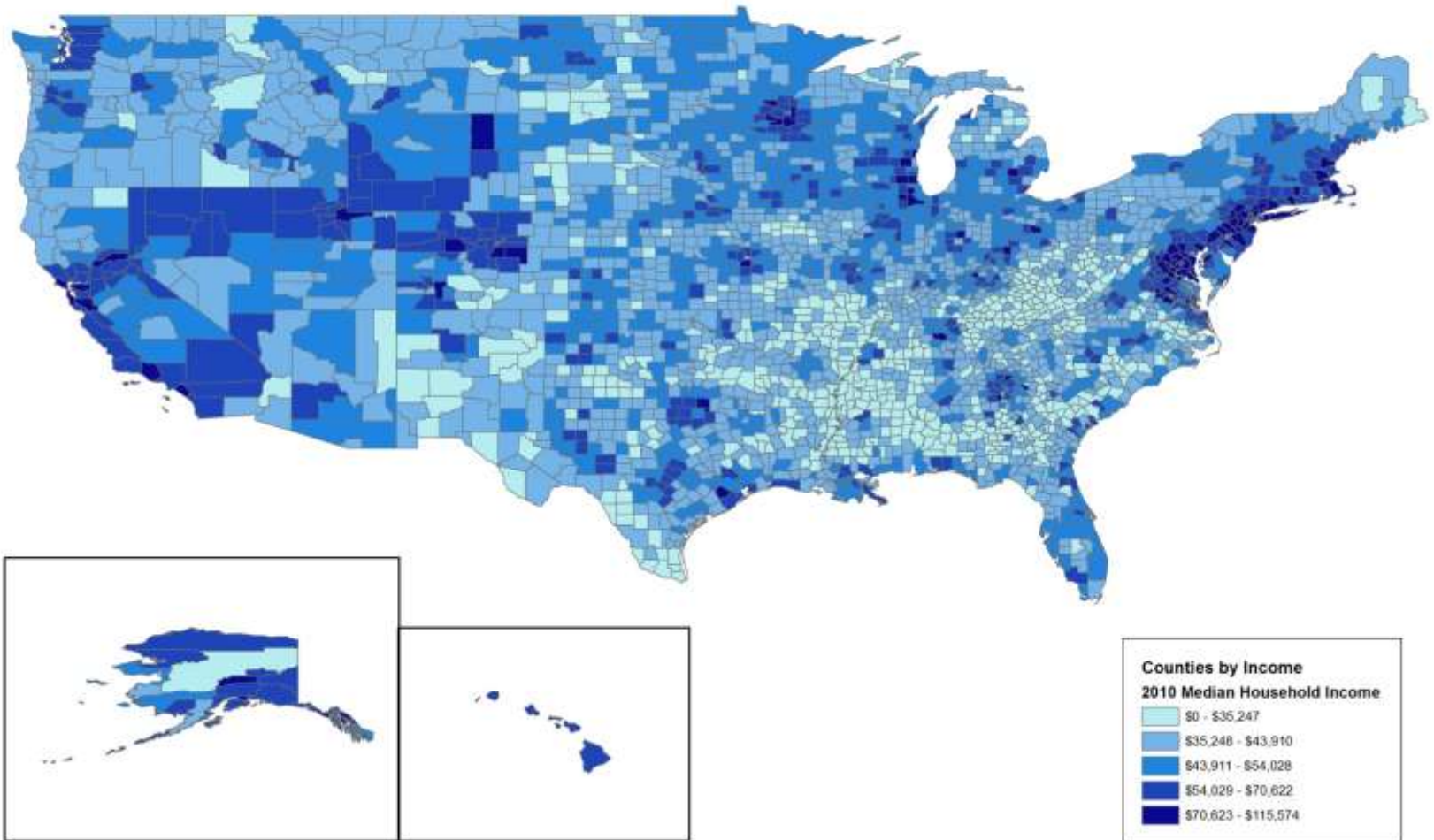
PERCENTAGE OF HIGH SCHOOL COMPLETERS WHO WERE ENROLLED IN 2- OR 4-YEAR COLLEGES THE OCTOBER IMMEDIATELY FOLLOWING HIGH SCHOOL COMPLETION, BY FAMILY INCOME: 1990-2012



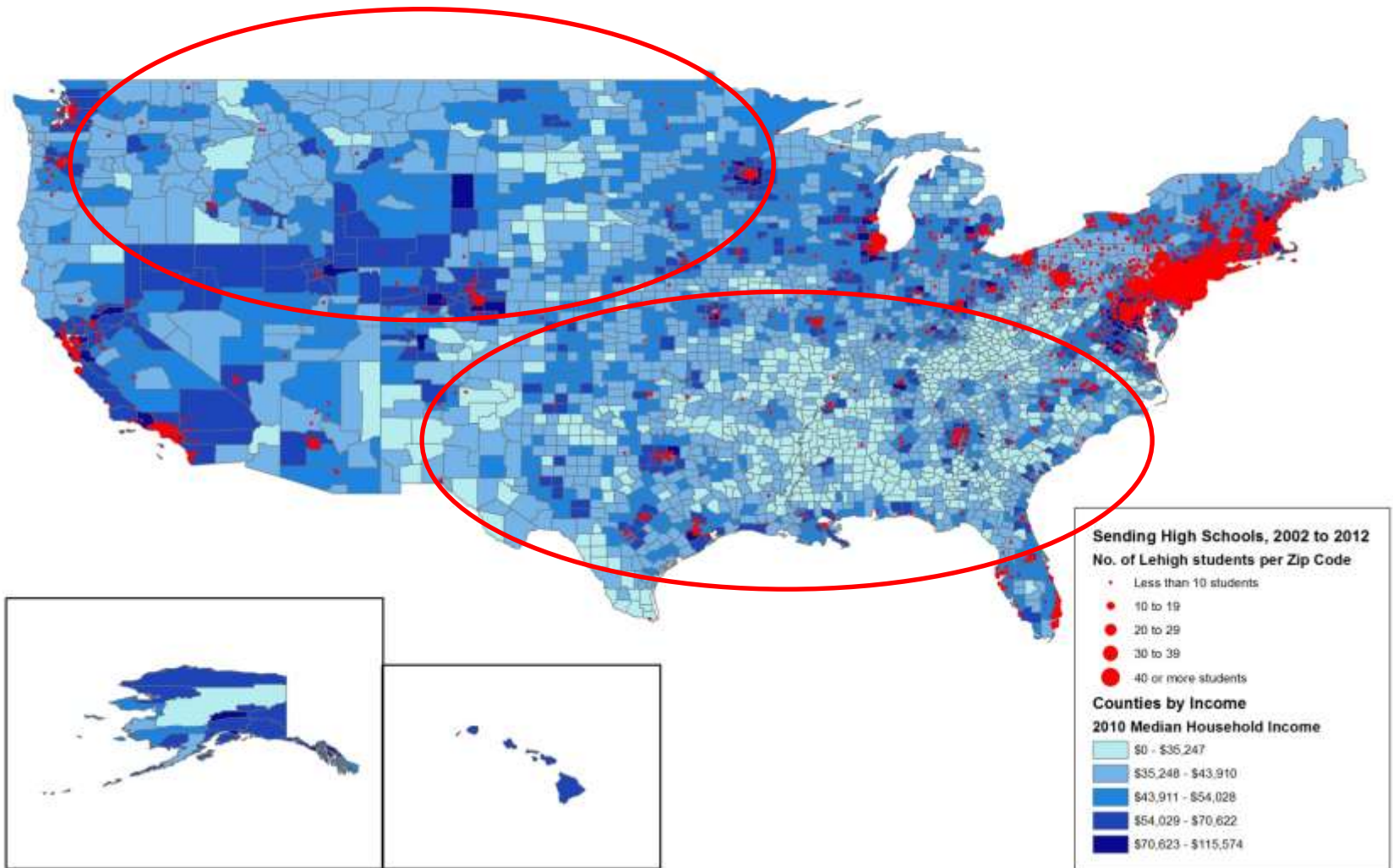
Source: U.S. Department of Education, *The Condition of Education 2014*



2010 Median Household Income by County

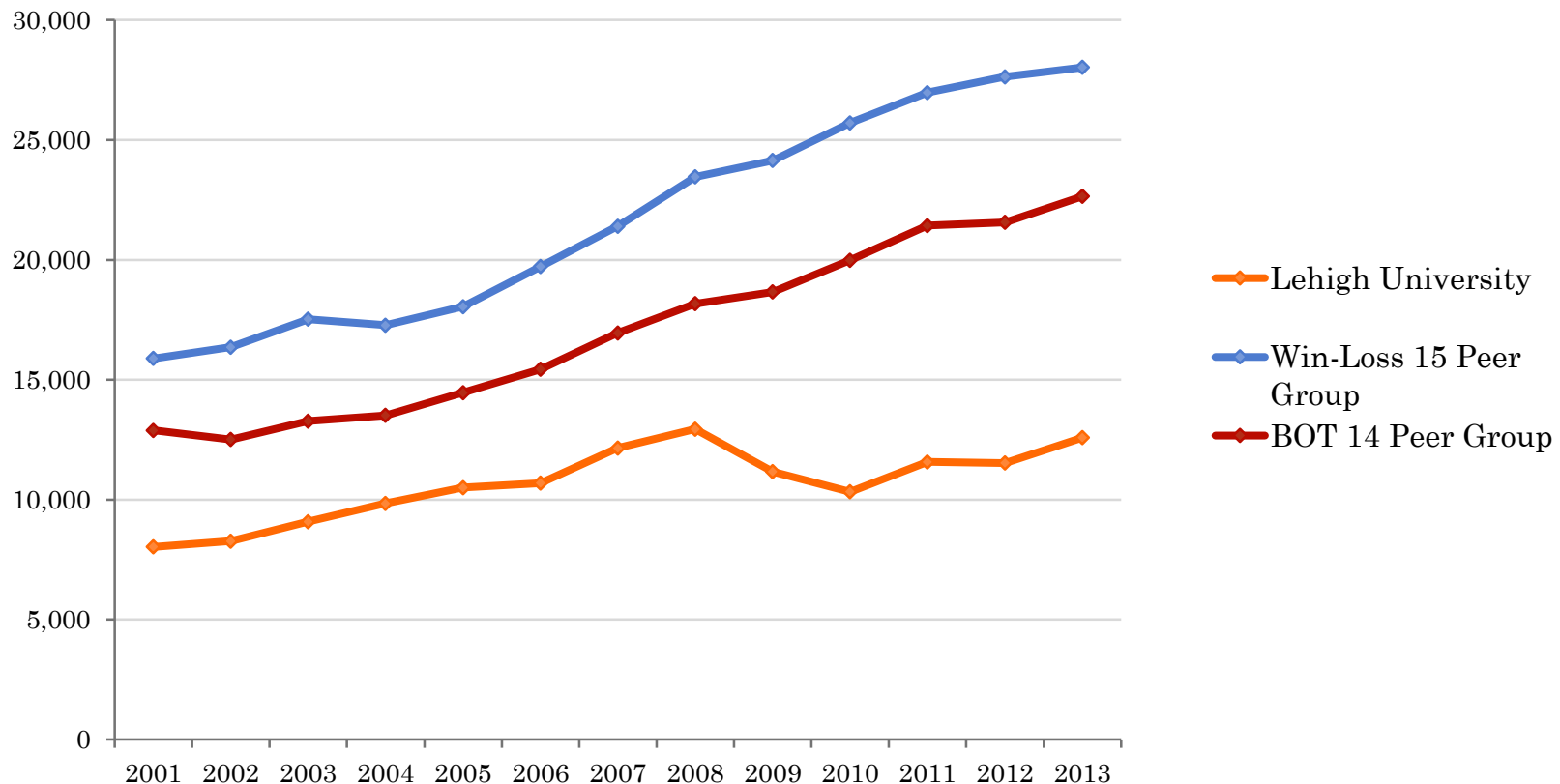


Lehigh's Sending High Schools, 2002 to 2012,
& 2010 Median Household Income by County



TRENDS IN APPLICANT POOL

No. of Applicants, 2001-2013 Lehigh vs. Peer Groups



Source: US News Academic Insights

QUESTIONS/COMMENTS?

Next Sessions:

10:10-10:40 a.m.

ADHD Effects Over Time: Insights into a unique collaboration between Academic Support Services for Students with Disabilities & Dr. George DuPaul, College of Education

Presented by: Cheryl Ashcroft, Assistant Dean of Students, & Dr. George DuPaul

10:50-11:20 a.m.

Sleep & Social Support: How these factors influence a student-athletes ability to integrate into campus culture

Presented by: Dr. Ian Birky, Director University Counseling & Psychological Services

11:30-Noon

Beacon: Seeing our students through a new lens

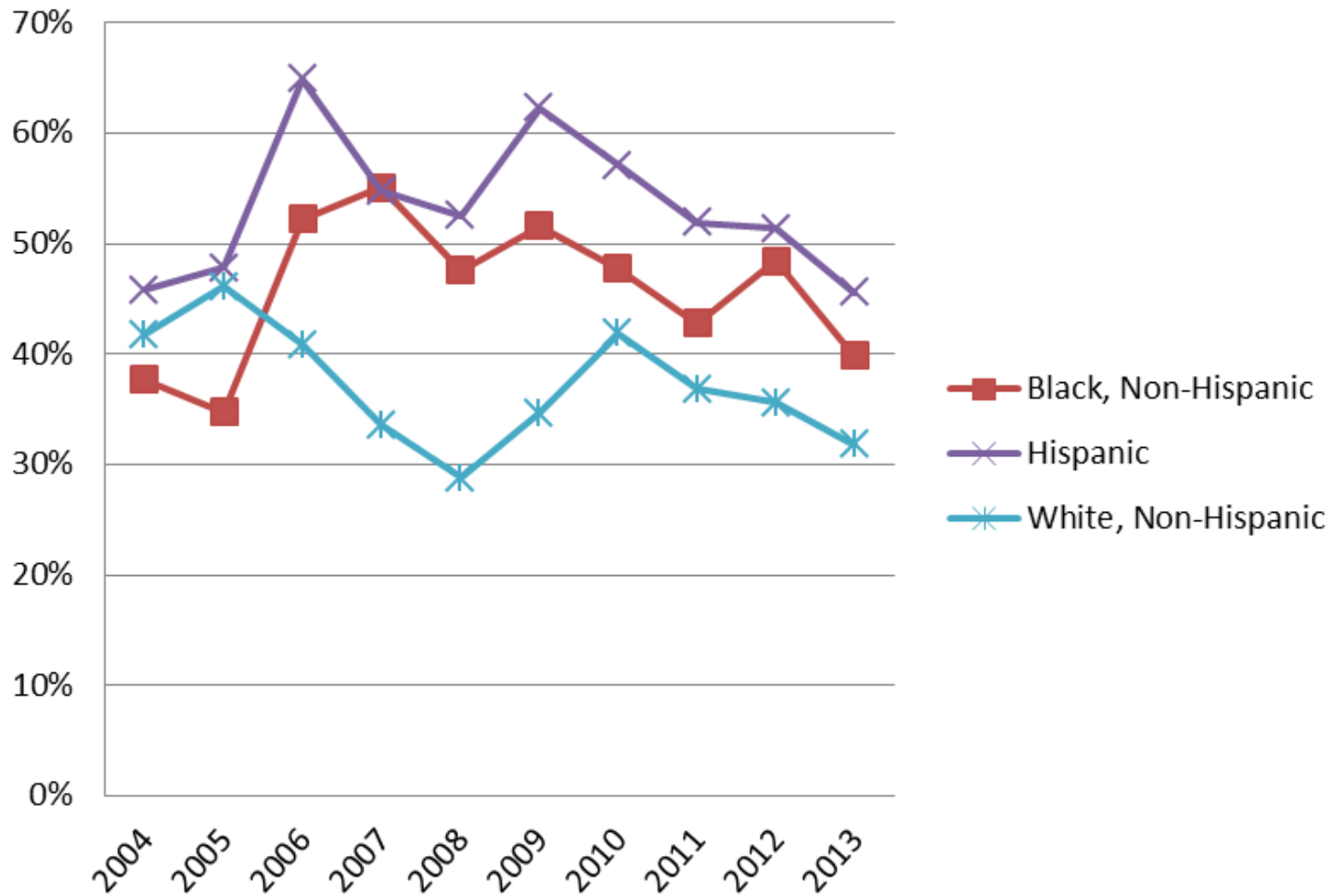
Presenters: Lori McClaind, Assistant Dean of Students & Meg Munley, OIR Research Analyst



EXTRA SLIDES



Admit Rate by Race/Ethnicity



Yield Rate by Race/Ethnicity

