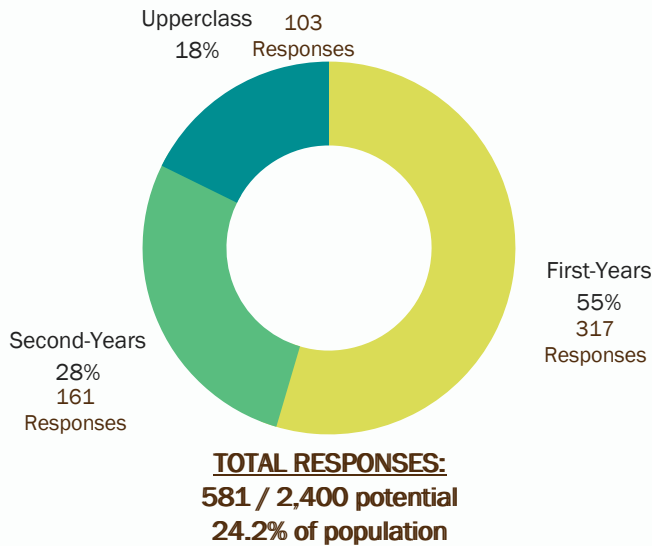
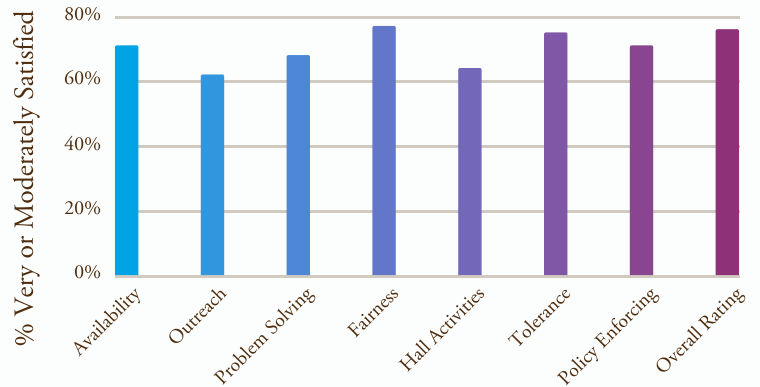




Residential Experience Assessment 2016-2017



Student Staff Assessment

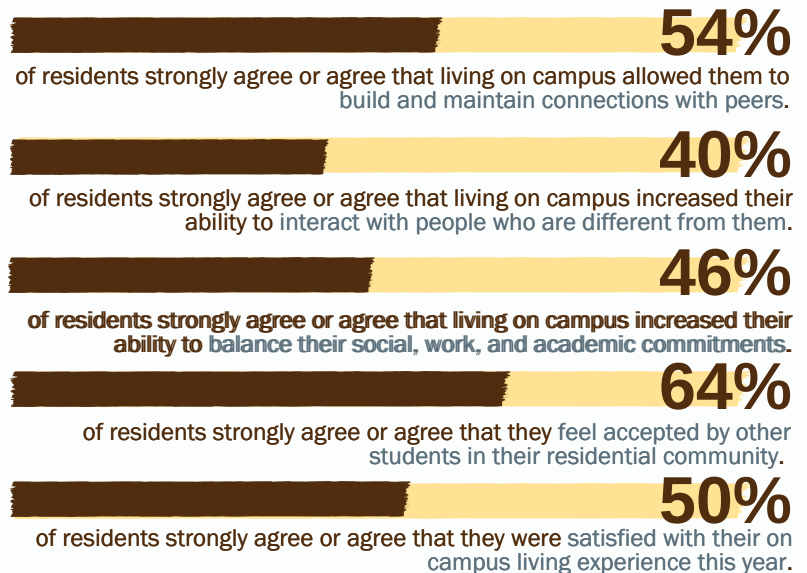


Programming Assessment

- 421** programs were held by Gryphons in the 2016-2017 academic year.
- 11%** of residents reported that they participate very often or often in programming sponsored by their residence hall.
- 43%** of residents were very satisfied or satisfied with the cultural, educational, or social programming offered.
- 41%** of residents were very satisfied or satisfied with the variety of programs.
- 47%** of residents were very satisfied or satisfied with the quality of programs.



Residential Living Assessment





43%

of residents strongly agree or agree that they were able to explore and participate in opportunities that aligned with their personal curiosities and interests.



46%

of residents strongly agree or agree that they actively engaged in conversations, discussions, or events that examine personal values and identities and how they intersect with those of others.



46%

of residents strongly agree or agree that they are confident in their ability to advocate for themselves and maintain positive relationships with others when conflict arises.



51%

of residents strongly agree or agree that they have become more aware of the diverse range of identities and experiences of their peers.



58%

of residents strongly agree or agree that they can articulate their personal definition of success.

Themed Communities Assessment

Themed Communities are unique housing communities that provide residents opportunities to connect with Lehigh faculty and staff, special programming and events, and a tight-knit community of fellow students who are passionate about a particular theme or topic.

523

Themed Community Residents in 2016-2017

53%

Residents in Themed Communities report a stronger sense of belonging than those that do not.

39%



60%

of Themed residents can articulate the benefits of living in a diverse environment.



54%

of Themed residents can articulate how living in their community has increased their overall learning.

OVER HALF

of Themed Community Advisors are full-time faculty members.



48%

of Themed residents noted that their living experience positively impacted their choice to return to Lehigh the following year.