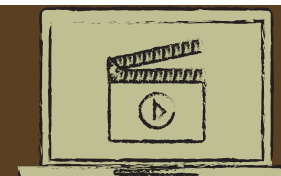
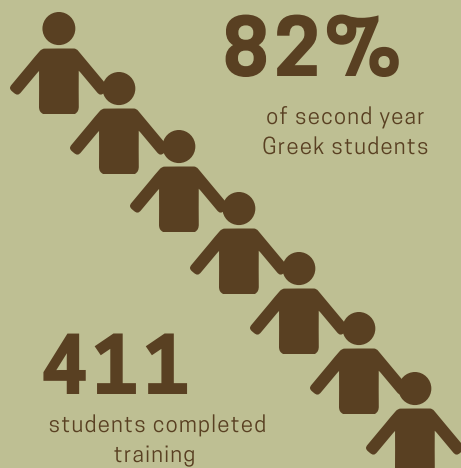


## INTERVENE FALL 2017

17 Session offered  
8 Staff Facilitators



91% of respondents believe it is socially acceptable at Lehigh to intervene in a potential sexual assault



*Intervene* is an in-person 60-minute workshop that provides an opportunity for students to view the video with others and engage in a facilitated conversation to reflect upon the attitudes and behaviors that influence the process of intervening as an individual or with assistance. Participants also discuss additional related scenarios not included in the film.

Over 90% of respondents indicated they were likely/very likely to intervene in an alcohol emergency with a friend



### Next Steps

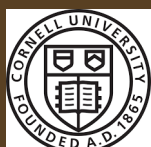
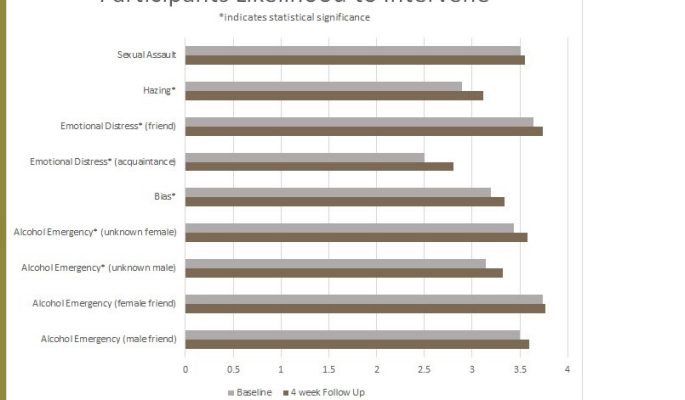
OFSA will be comparing these results with data from the OSC&CE to gauge real-world impact across the year. Additionally, the program will be evaluated in conjunction with other intervention efforts across the DOS Office and Division of Student Affairs

### Implications

- Students **increased in identifying a problem** across every scenario
- Students **increased their likelihood to intervene** in alcohol emergencies with someone they do not know
- Students increased their belief that it is **socially acceptable** at Lehigh to intervene in the following scenarios after the workshop: Hazing & Bias incidents

Participants Likelihood to Intervene

\*Indicates statistical significance



This program is being used with the permission of The Skorton Center for Health Initiatives at Cornell Health, in collaboration with the Cornell Interactive Theater Ensemble, which developed the bystander intervention video and workshop called Intervene © 2016.