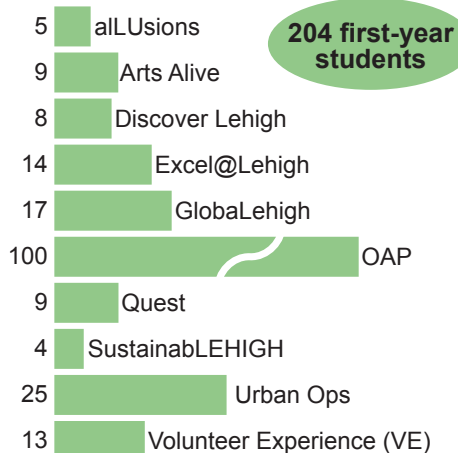


Prelusion is a set of programs offered through the OFYE to help students jump start their Lehigh experience. Topics, learning outcomes, and itineraries vary greatly between the ten Prelusion programs and each seeks to target students with a particular interest. Outside offices work with the OFYE to design and implement the various programs.

## WHO ATTENDED?



Prelusion Participants in New York City

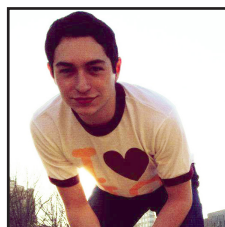
## WHY DID THEY ATTEND?

- 90% make friends or meet people
- 70% interested in program topic
- 50% to move in early

**About the same as 2012**

## WHAT DID THEY GET OUT OF IT?

- 95% made moderate or strong peer connections
- 80% plan to stay connected with hosting office/department



Greg Victoio - Discover Lehigh  
Stayed connected to the OFYE by becoming an Orientation Leader



Prelusion Participants Volunteer at First-Year Move-In

## OTHER NOTES...

- \$304=Average cost to attend a Prelusion program
- 95% of attendees would recommend their program to other new students
- The majority of students in programs that stayed on on-campus attended social events in the evenings
- Student leaders played a large part in the success of the programs and were frequently noted as the most beneficial aspect of the experience

- Biggest reservations for students that did not sign up are cost and not wanting to leave home early

## RECOMMENDATIONS FOR NEXT YEAR...

- Find ways to subsidize cost of programs
- Adjust the Monday and Tuesday social events