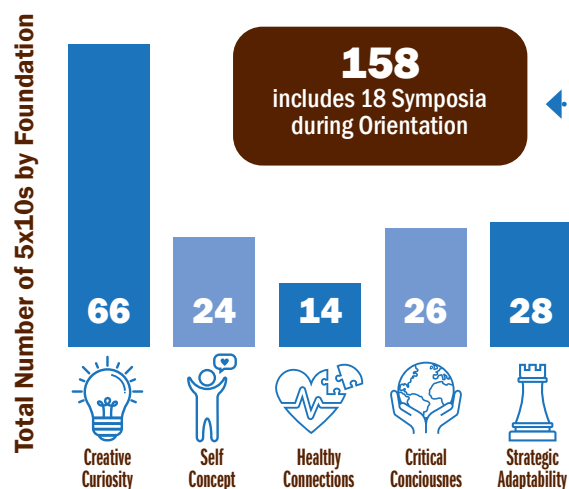


5x10 ASSESSMENT INSIGHT 2025

The 5x10, which reads as five by ten, is a programming series open to all Lehigh students with a specific focus on first-year students and their connection to Lehigh. All first-year students are expected to attend five programs during the first ten weeks of the semester. Students have a wide variety of programs to choose from.



TOTAL NUMBER OF 5X10s

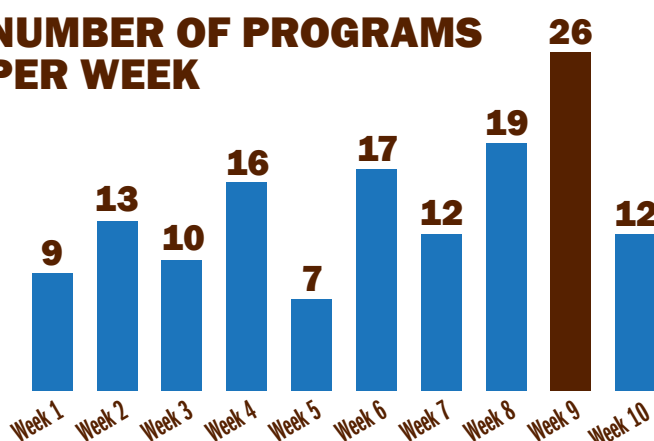


PERCENTAGE OF STUDENTS WHO COMPLETED THEIR 5X10s

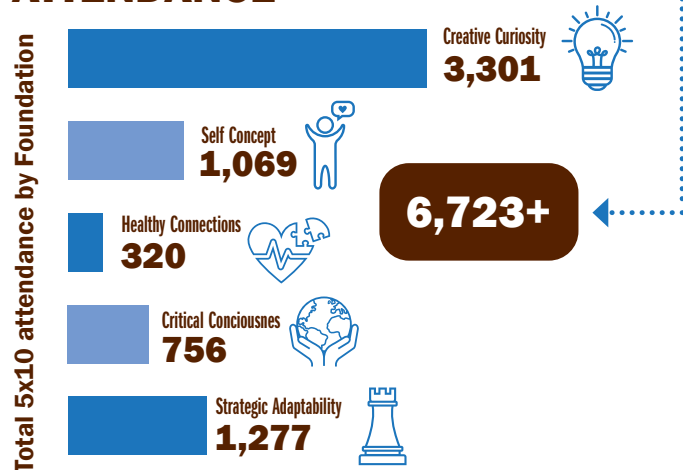
Due to some tracking issues, we believe this number is closer to 80%.

67%+

NUMBER OF PROGRAMS PER WEEK



TOTAL 5X10 PROGRAM ATTENDANCE



NUMBER OF PROGRAMS PER DAY OF WEEK

SUNDAY	1
MONDAY	16
TUESDAY	34
WEDNESDAY	41
THURSDAY	26
FRIDAY	37*
SATURDAY	3

TIMING OF PROGRAMS

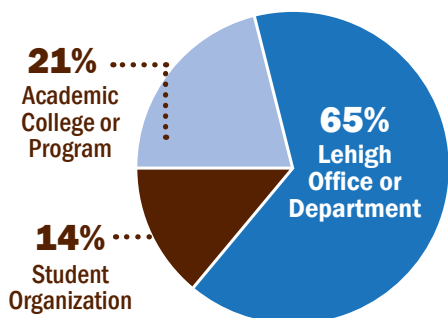
8AM-12PM → 11

12PM-4PM → 41*

4PM-8PM → 106

*Including the 17 Symposia

5X10s HOSTED BY:



92%

Students report having a better understanding of the foundation the 5x10 was associated with

ASSESSMENT HIGHLIGHTS

Why did students choose particular 5x10s?

- 82%** It sounded Interesting
- 62%** To fulfill the 5x10 requirements
- 46%** Time/Date/Location were convenient
- 32%** My friends were also attending
- 3%** Because of a conversation I had with my NavigateLU Coach

93%

I would recommend this 5x10 to other first-year students